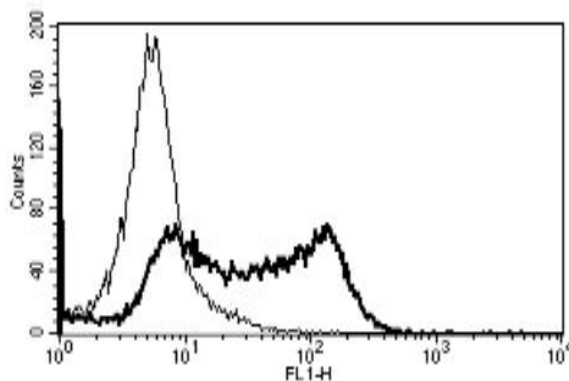


SELL

Mouse Anti-Human L-Selectin/ CD62L (Clone B-S13) mAb

Catalog No.	CDM058	Quantity:	200 tests
Alternate Names:	CD62L, LAM1, LECAM1, LEU8, LNHR, LSEL, LYAM1, PLNHR, TQ1		
Description:	The mouse monoclonal antibody recognizes L-Selectin/CD62L, a cell surface adhesion molecule that belongs to a family of adhesion/homing receptors. It plays a role in the migration of lymphocytes into peripheral lymph nodes and sites of chronic inflammation, and of neutrophils into acute inflammatory sites.		
Gene ID:	6402		
Concentration:	100 tests/ ml		
Conjugate:	Unconjugated		
Specificity:	Recognizes L-selectin/ CD62L, the Leucocyte Endothelial Cell Adhesion Molecule-1 (LECAM-1), a 74-95 kDa protein. Recognizes the soluble antigen.		
Host:	Mouse		
Isotype:	IgG1		
Immunogen:	CD62L transfected CHO cell line		
Clone:	B-S13		
Formulation:	Liquid in PBS + 1% BSA + 0.09% sodium azide. Precaution: Sodium azide is a poisonous and hazardous substance which should be handled by trained staff only.		
Applications:	Flow Cytometry		
Application Notes:	The optimal concentration should be determined by the user for each specific application.		
Storage & Stability:	Stable at 2-8°C for 1 year. For long-term storage, freeze aliquots at -20 to -80°C. Avoid repeated freeze-thaw cycles.		

A typical staining pattern with the B-S13 monoclonal antibody of PBL



NOT FOR HUMAN USE. FOR RESEARCH ONLY. NOT FOR DIAGNOSTIC OR THERAPEUTIC USE.

