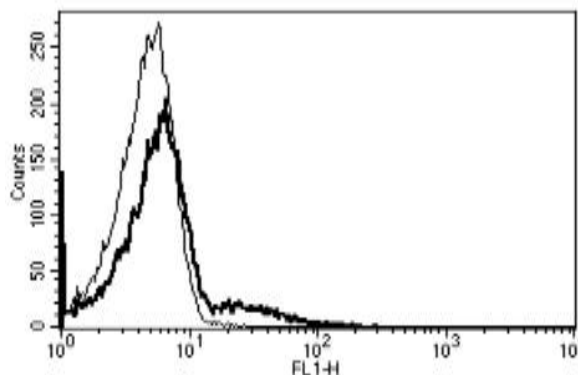


## FCER2

### Mouse Anti-Human CD23 Clone B-G6 FITC mAb

<b>Catalog No.</b>	CDM168	<b>Quantity:</b>	100 tests
<b>Alternate Names:</b>	BLAST-2, CD23, CD23A, CLEC4J, FCE2, IGEBF		
<b>Description:</b>	Mouse Anti-Human CD23 Clone B-G6 Azide Free mAb		
<b>Concentration:</b>	100 tests / 1 ml		
<b>Gene ID:</b>	2208		
<b>Hybridoma:</b>	Myeloma X63/AG.8653 x BALB/c spleen cells		
<b>Specificity:</b>	Recognizes the low affinity IgE receptor (Fce RII), a 45 kDa protein		
<b>Host:</b>	Mouse		
<b>Immunogen:</b>	Daudi cell line		
<b>Isotype:</b>	IgG1		
<b>Clone:</b>	B-G6		
<b>Conjugate:</b>	FITC		
<b>Formulation:</b>	PBS + 1% BSA + 0.09% sodium azide. Precaution: Sodium azide is a poisonous and hazardous substance which should be handled by trained staff only.		
<b>Purification:</b>	Ion exchange chromatography		
<b>Applications:</b>	Flow cytometry		
<b>Application Notes:</b>	Use 10 $\mu$ l to label $10^6$ cells or 100 $\mu$ l of whole blood		
<b>Storage &amp; Stability:</b>	Stable at 2-8°C for one year. For longer storage, freeze aliquots at -20°C. <b>Avoid repeated freeze-thaw cycles.</b>		

A typical staining pattern with the B-G6 monoclonal antibody of lymphocytes



NOT FOR HUMAN USE. FOR RESEARCH ONLY. NOT FOR DIAGNOSTIC OR THERAPEUTIC USE.



**Cell Sciences®**  
65 Parker Street  
Unit 11  
Newburyport, MA 01950

Toll Free: 888-769-1246  
Phone: 978-572-1070  
Fax: 978-992-0298

E-mail: [info@cellsciences.com](mailto:info@cellsciences.com)  
Website: [www.cellsciences.com](http://www.cellsciences.com)