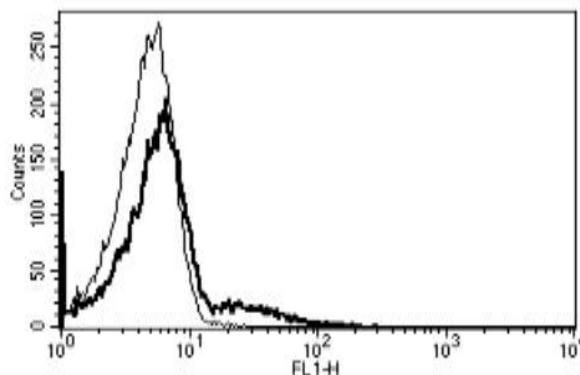


FCER2

Mouse Anti-Human CD23 Clone B-G6 mAb

Catalog No.	CDM170	Quantity:	200 tests
Alternate Names:	BLAST-2, CD23, CD23A, CLEC4J, FCE2, IGEBF		
Description:	Mouse Anti-Human CD23 Clone B-G6 Azide Free mAb		
Concentration:	200 tests / 2 ml		
Gene ID:	2208		
Hybridoma:	Myeloma X63/AG.8653 x BALB/c spleen cells		
Specificity:	Recognizes the low affinity IgE receptor (Fce RII), a 45 kDa protein		
Host:	Mouse		
Immunogen:	Daudi cell line		
Isotype:	IgG1		
Clone:	B-G6		
Formulation:	PBS + 1% BSA + 0.09% sodium azide. Precaution: Sodium azide is a poisonous and hazardous substance which should be handled by trained staff only.		
Purification:	Ion exchange chromatography		
Applications:	Flow cytometry		
Application Notes:	Use 10 µl to label 10 ⁶ cells or 100 µl of whole blood		
Storage & Stability:	Stable at 2-8°C for one year. For longer storage, freeze aliquots at -20°C. Avoid repeated freeze-thaw cycles.		

A typical staining pattern with the B-G6 monoclonal antibody of lymphocytes



NOT FOR HUMAN USE. FOR RESEARCH ONLY. NOT FOR DIAGNOSTIC OR THERAPEUTIC USE.

