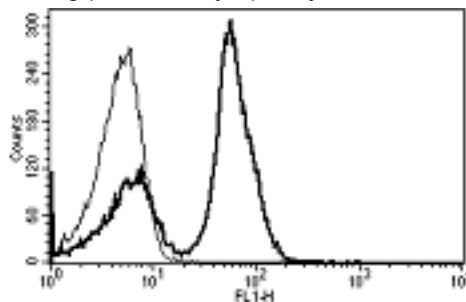


## CD28

### Mouse Anti-Human CD28 (Clone B-T3) mAb, Azide Free

<b>Catalog No.</b>	CDM171A CDM171B	<b>Quantity:</b>	200 µg 500 µg
<b>Alternate Names:</b>	T-cell-specific surface glycoprotein CD28, Tp44		
<b>Description:</b>	The mouse monoclonal antibody recognizes human CD28, a cell-surface protein essential for T-cell activation. CD28 provides T cells with a "second signal," or co-stimulation, which, along with T cell receptor (TCR) ligation, induces proliferation and survival, and cytokine production. TCR stimulation without co-stimulation results in anergy of the T cell. CD28 interacts with CD80 (B7.1) and CD86 (B7.2), found on antigen presenting cells (APCs).		
<b>UniProt ID:</b>	P10747		
<b>Gene ID:</b>	940		
<b>Concentration:</b>	1.0 mg/mL		
<b>Specificity:</b>	Recognizes CD28 (B7/BB1 receptor), a 44 kDa protein.		
<b>Hybridoma:</b>	Myeloma X63/AG.8653 x Balb/c spleen cells		
<b>Isotype:</b>	Mouse IgG2a Kappa light chain		
<b>Immunogen:</b>	U266 cell line		
<b>Clone:</b>	B-T3		
<b>Formulation:</b>	Sterile filtered PBS, carrier and preservative free		
<b>Purification:</b>	Ion exchange chromatography		
<b>Biological Activity:</b>	Inhibits mixed lymphocyte culture, co-stimulates T cell proliferation.		
<b>Applications:</b>	Flow Cytometry, Functional Studies, Immunohistochemistry		
<b>Storage &amp; Stability:</b>	Stable at 2-8°C for one year. For longer storage, freeze aliquots at -20°C to -80°C. <b>Avoid repeated freeze-thaw cycles.</b>		

Typical staining pattern of lymphocytes with the B-T3 mAb.



# cellsciences.com

NOT FOR HUMAN USE. FOR RESEARCH ONLY. NOT FOR DIAGNOSTIC OR THERAPEUTIC USE.



**Cell Sciences®**  
65 Parker Street  
Unit 11  
Newburyport, MA 01950

Toll Free: 888-769-1246  
Phone: 978-572-1070  
Fax: 978-992-0298

E-mail: [info@cellsciences.com](mailto:info@cellsciences.com)  
Website: [www.cellsciences.com](http://www.cellsciences.com)