

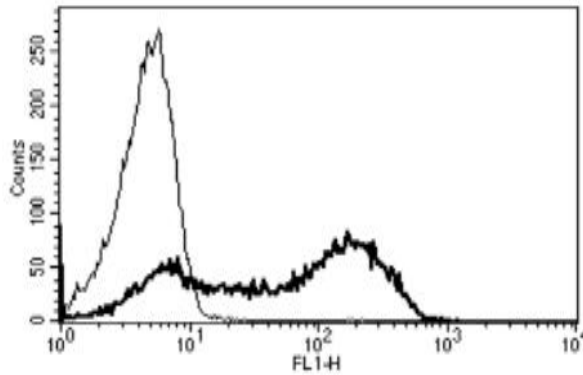
PTPRC

Mouse Anti-Human CD45RA (Clone B-C15) FITC mAb

Catalog No.	CDM190	Quantity:	100 tests
Alternate Names:	Receptor-type tyrosine-protein phosphatase C, Leukocyte common antigen, L-CA, T200, CD45		
Description:	The CD45RA antigen is a member of the CD45 antigen family that also includes the CD45, CD45RB, and CD45RO antigens. The CD45RA antigen is present on approximately 50% of CD4+ T lymphocytes, approximately 75% of CD8+ T lymphocytes, and on essentially all B lymphocytes and natural killer lymphocytes. ¹⁹ The suppressor inducer T-lymphocyte subset expresses the phenotype CD4+CD45RA+. ¹⁹ The CD45RA antigen is expressed on naive T lymphocytes; antigen density decreases upon in vitro activation. ²⁰ A selective loss of the CD4+CD45RA+ subset during active multiple sclerosis has been demonstrated.		
UniProt ID:	P08575		
Gene ID:	5788		
Hybridoma:	Myeloma X63/AG.8653 x BALB/c spleen cells		
Specificity:	Recognizes the restricted Leucocyte Antigen (LCA) with different isoforms of 205-220 kDa		
Host:	Mouse		
Immunogen:	Reh 6 cell line		
Isotype:	IgG1		
Clone:	B-C15		
Conjugate:	FITC		
Formulation:	PBS, 1% BSA, 0.1% sodium azide. Precaution: Sodium azide is a poisonous and hazardous substance which should be handled by trained staff only.		
Purification:	Ion exchange chromatography		
Concentration:	100 tests / 1 ml		
Applications:	Flow Cytometry		
Application Notes:	Use 10 µl to label 10 ⁶ cells or 100 µl of whole blood.		
Storage & Stability:	Stable at 2-8°C for 12 months. For longer storage, freeze aliquots. Avoid repeated freeze-thaw cycles.		



A typical staining pattern with the B-C15 monoclonal antibody of lymphocytes.



NOT FOR HUMAN USE. FOR RESEARCH ONLY. NOT FOR DIAGNOSTIC OR THERAPEUTIC USE.



Cell Sciences®
65 Parker Street
Unit 11
Newburyport, MA 01950

Toll Free: 888-769-1246
Phone: 978-572-1070
Fax: 978-992-0298

E-mail: info@cellsciences.com
Website: www.cellsciences.com