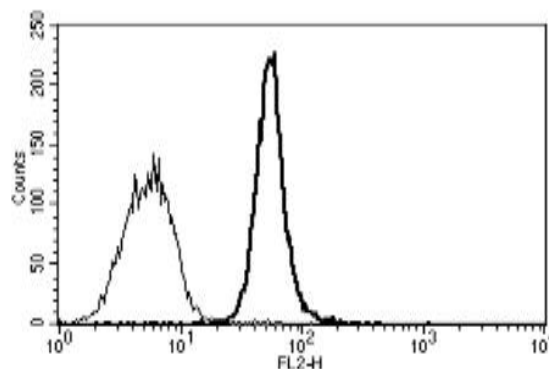


CD34

Mouse Anti-Human CD34 (Class 3) (Clone B-K34) PE mAb

Catalog No.	CDM228	Quantity:	100 tests
Description:	The monoclonal antibody recognizes the class 3 epitope of the human CD34 molecule. CD34 is a monomeric cell surface antigen that is selectively expressed on human hematopoietic stem/ progenitor cells.		
Gene ID:	947		
Conjugate:	PE		
Specificity:	Recognizes the class 3 epitope of CD34, a 105-120 kDa protein.		
Host:	Mouse		
Isotype:	IgG1		
Immunogen:	Human CD34 leukemia cells		
Clone:	B-K34		
Formulation:	Phosphate-buffered saline with 1% BSA and 0.1% sodium azide.		
Reconstitution:	Reconstitute with 1 ml deionized water.		
Applications:	Flow cytometry		
Application Notes:	Use 10 μ l to label 10^6 cells or 100 μ l of whole blood		
Storage & Stability:	Stable at +2-8°C for six months after reconstitution. DO NOT FREEZE.		

A typical staining pattern with the B-K34 monoclonal antibody of KG-1a cell line.



NOT FOR HUMAN USE. FOR RESEARCH ONLY. NOT FOR DIAGNOSTIC OR THERAPEUTIC USE.



Cell Sciences[®]
65 Parker Street
Unit 11
Newburyport, MA 01950

Toll Free: 888-769-1246
Phone: 978-572-1070
Fax: 978-992-0298

E-mail: info@cellsciences.com
Website: www.cellsciences.com