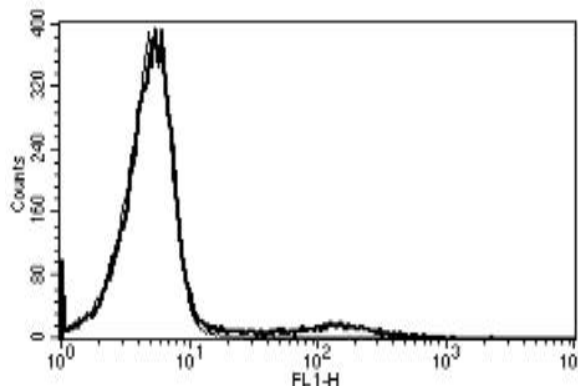


## HLA-DRA, HLA-DRB

### Mouse Anti-Human HLA Class II DR (Clone B-F1) mAb, Azide Free

<b>Catalog No.</b>	CDM336A CDM336B	<b>Quantity:</b>	200 µg 500 µg
<b>Alternate Names:</b>	HLA class II histocompatibility antigen, DR alpha chain, DR beta chain, MHC class II DRA, MHC class II DRB		
<b>Description:</b>	HLA class II molecule is a heterodimer consisting of an alpha (DRA) and a beta chain (DRB1,3,4,5), both anchored in the membrane. It plays a central role in the immune system by presenting peptides derived from extracellular proteins. Class II molecules are expressed in antigen presenting cells (APC: B Lymphocytes, dendritic cells, macrophages). The alpha chain is approximately 33-35 kDa, the beta chain is approximately 26-28 kDa.		
<b>UniProt ID:</b>	P01903		
<b>Gene ID:</b>	3122		
<b>Concentration:</b>	1.0 mg/ml		
<b>Specificity:</b>	Recognizes a 28 kDa and 33 kDa protein		
<b>Hybridoma:</b>	Myeloma X63/AG.8653 x BALB/c spleen cells		
<b>Immunogen:</b>	Chronic Lymphoid Leukemia (CLL) cells		
<b>Isotype:</b>	Mouse IgG1κ		
<b>Clone:</b>	B-F1		
<b>Formulation:</b>	Sterile-filtered PBS, carrier and preservative free.		
<b>Purification:</b>	Ion exchange chromatography		
<b>Applications:</b>	Flow cytometry, Immunoprecipitation		
<b>Storage &amp; Stability:</b>	Stable at 2-8°C for 1 year. For longer storage, freeze in aliquots at -20°C to -80°C. <b>Avoid repeated freeze-thaw cycles.</b>		

A typical staining pattern with the B-F1 monoclonal antibody of lymphocytes



# cellsciences.com

NOT FOR HUMAN USE. FOR RESEARCH ONLY. NOT FOR DIAGNOSTIC OR THERAPEUTIC USE.



**Cell Sciences®**  
65 Parker Street  
Unit 11  
Newburyport, MA 01950

Toll Free: 888-769-1246  
Phone: 978-572-1070  
Fax: 978-992-0298

E-mail: [info@cellsciences.com](mailto:info@cellsciences.com)  
Website: [www.cellsciences.com](http://www.cellsciences.com)