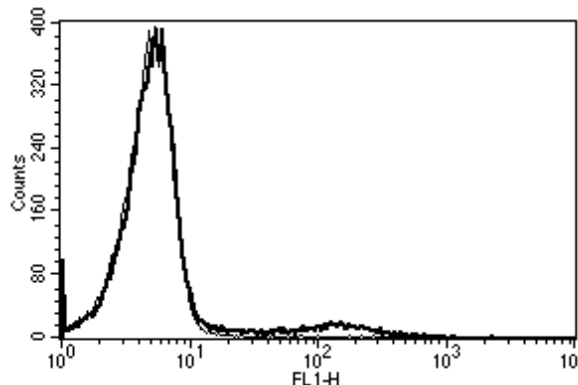


HLA-DRA, HLA-DRB

Mouse Anti-Human HLA Class II DR (Clone B-F1) mAb

Catalog No.	CDM339	Quantity:	200 tests
Alternate Names:	HLA class II histocompatibility antigen, DR alpha chain, DR beta chain, MHC class II DRA, MHC class II DRB		
Description:	HLA class II molecule is a heterodimer consisting of an alpha (DRA) and a beta chain (DRB1,3,4,5), both anchored in the membrane. It plays a central role in the immune system by presenting peptides derived from extracellular proteins. Class II molecules are expressed in antigen presenting cells (APC: B Lymphocytes, dendritic cells, macrophages). The alpha chain is approximately 33-35 kDa, the beta chain is approximately 26-28 kDa.		
UniProt ID:	P01903		
Gene ID:	3122		
Hybridoma:	Myeloma X63/AG.8653 x BALB/c spleen cells		
Specificity:	Recognizes a 28 kDa and 33 kDa protein		
Host:	Mouse		
Immunogen:	Chronic Lymphoid Leukemia Cells (CLL)		
Isotype:	IgG1		
Clone:	B-F1		
Concentration:	200 tests / 2 ml		
Formulation:	PBS containing 1% BSA and 0.1% sodium azide.		
Purification:	Ion exchange chromatography		
Applications:	Flow cytometry. Use 10 µl to label 10 ⁶ cells or 100 µl of whole blood. The optimal concentration should be determined by the user for each specific application.		
Storage & Stability:	Stable for 2-8°C for 12 months. For longer storage, freeze aliquots. Avoid repeated freeze-thaw cycles.		

A typical staining pattern with the B-F1 monoclonal antibody of lymphocytes.



NOT FOR HUMAN USE. FOR RESEARCH ONLY. NOT FOR DIAGNOSTIC OR THERAPEUTIC USE.



Cell Sciences®
65 Parker Street
Unit 11
Newburyport, MA 01950

Toll Free: 888-769-1246
Phone: 978-572-1070
Fax: 978-992-0298

E-mail: info@cellsciences.com
Website: www.cellsciences.com

cellsciences.com



Cell Sciences®
65 Parker Street
Unit 11
Newburyport, MA 01950

Toll Free: 888-769-1246
Phone: 978-572-1070
Fax: 978-992-0298

E-mail: info@cellsciences.com
Website: www.cellsciences.com