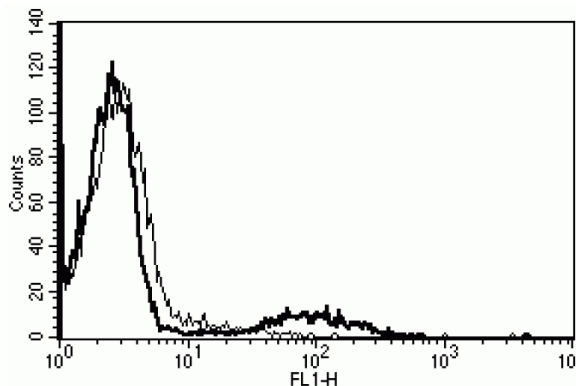


## HLA-DQA1, HLA-DQB1

### Mouse Anti-Human HLA Class II DQ (Clone B-K27) mAb

<b>Catalog No.</b>	CDM345	<b>Quantity:</b>	200 tests
<b>Alternate Names:</b>	HLA class II histocompatibility antigen, DQ alpha 1 chain, DQ beta 1 chain, MHC class II DQA1, MHC class II DQB1		
<b>Description:</b>	HLA class II molecule is a heterodimer consisting of an alpha (DQA) and a beta chain (DQB), both anchored in the membrane. It plays a central role in the immune system by presenting peptides derived from extracellular proteins. Class II molecules are expressed in antigen presenting cells (APC: B Lymphocytes, dendritic cells, macrophages). The alpha chain is approximately 33-35 kDa, the beta chain is approximately 26-28 kDa.		
<b>UniProt ID:</b>	P01909, P01920		
<b>Gene ID:</b>	3117, 3119		
<b>Hybridoma:</b>	Myeloma X63/AG.8653 x BALB/c spleen cells		
<b>Specificity:</b>	Recognizes a 28 kDa and 33 kDa complex		
<b>Immunogen:</b>	T4 + CTL clone HG-38		
<b>Isotype:</b>	Mouse IgG2a $\kappa$		
<b>Clone:</b>	B-K27		
<b>Concentration:</b>	200 tests / 2 ml		
<b>Formulation:</b>	PBS, 1% BSA , 0.1% Sodium Azide.		
<b>Purification:</b>	Ion exchange chromatography		
<b>Applications:</b>	FC, IP		
<b>Application Notes:</b>	Use 10 $\mu$ l to label 10 <sup>6</sup> cells or 100 $\mu$ l of whole blood. The optimal concentration should be determined by the user for each specific application.		
<b>Storage &amp; Stability:</b>	Stable at 2-8°C for 1 year. For longer storage, freeze aliquots. <b>Avoid repeated freeze-thaw cycles.</b>		

A typical staining pattern with the B-K27 monoclonal antibody of lymphocytes



**NOT FOR HUMAN USE. FOR RESEARCH ONLY. NOT FOR DIAGNOSTIC OR THERAPEUTIC USE.**