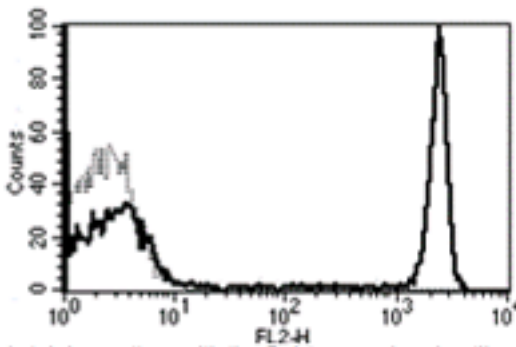


## CD4

### Mouse Anti-Human CD4 (Clone B-A1) PE mAb

<b>Catalog No.</b>	CDM362	<b>Quantity:</b>	100 tests
<b>Alternate Names:</b>	CD4mut, T-cell surface antigen T4/Leu-3		
<b>Description:</b>	The mouse monoclonal antibody recognizes human CD4, a membrane glycoprotein of T lymphocytes that interacts with major histocompatibility complex class II (MHC II) and is also a receptor for the human immunodeficiency virus. This gene is expressed not only in T lymphocytes, but also in B cells, macrophages, and granulocytes. It is also expressed in specific regions of the brain. The protein functions to initiate or augment the early phase of T-cell activation, and may function as an important mediator of indirect neuronal damage in infectious and immune-mediated diseases of the central nervous system.		
<b>Gene ID:</b>	920		
<b>Conjugate:</b>	PE		
<b>Specificity:</b>	Recognizes a 55 kDa protein.		
<b>Host:</b>	Mouse		
<b>Isotype:</b>	IgG2a		
<b>Immunogen:</b>	Human thymocytes and jurkat cell lines		
<b>Clone:</b>	B-A1		
<b>Formulation:</b>	Lyophilized from PBS + 5% BSA + 0.1% sodium azide. Precaution: Sodium azide is a poisonous and hazardous substance which should be handled by trained staff only.		
<b>Reconstitution:</b>	<b>Centrifuge vial prior to opening.</b> Reconstitute with 1 ml deionized water.		
<b>Biological Activity:</b>	Kd : 0.142 nM		
<b>Applications:</b>	Flow Cytometry		
<b>Application Notes:</b>	Use 10 µl to label 10 <sup>6</sup> cells or 100 µl of whole blood. The optimal concentration should be determined by the user for each specific application.		
<b>Storage &amp; Stability:</b>	Store at 2-8°C for up to 6 months after reconstitution. <b>DO NOT FREEZE. Avoid repeated freeze-thaw cycles.</b>		

A typical staining pattern with the Anti-Human CD4 Clone B-A1 monoclonal antibody of lymphocytes



NOT FOR HUMAN USE. FOR RESEARCH ONLY. NOT FOR DIAGNOSTIC OR THERAPEUTIC USE.

