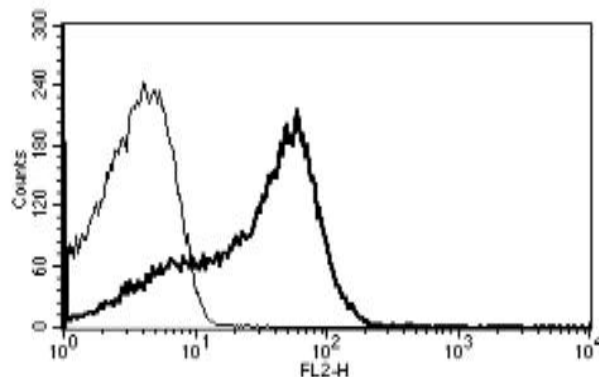


CD7

Mouse Anti-Human CD7 (Clone B-F12) PE mAb

Catalog No.	CDM365	Quantity:	100 tests
Alternate Names:	GP40, LEU-9, TP41, Tp40		
Description:	The mouse monoclonal antibody recognizes human CD7, a transmembrane protein which is a member of the immunoglobulin superfamily. CD7 is found on thymocytes and mature T cells. It plays an essential role in T-cell interactions and also in T-cell/B-cell interaction during early lymphoid development.		
Gene ID:	924		
Conjugate:	PE		
Specificity:	Recognizes CD7, a 40 kDa protein		
Host:	Mouse		
Isotype:	IgG1		
Immunogen:	Chronic Lymphoid Leukemia cells (CLL)		
Clone:	B-F12		
Formulation:	Lyophilized from PBS + 5% BSA + 0.1% sodium azide.		
Reconstitution:	Reconstitute with 1 ml deionized water.		
Applications:	Flow Cytometry		
Application Notes:	Use 10 µl to label 10 ⁶ cells or 100 µl of whole blood. The optimal concentration should be determined by the user for each specific application.		
Storage & Stability:	Stable at 2-8°C for 6 months after reconstitution. DO NOT FREEZE.		

A typical staining pattern with the B-F12 monoclonal antibody of lymphocytes



NOT FOR HUMAN USE. FOR RESEARCH ONLY. NOT FOR DIAGNOSTIC OR THERAPEUTIC USE.



Cell Sciences®
65 Parker Street
Unit 11
Newburyport, MA 01950

Toll Free: 888-769-1246
Phone: 978-572-1070
Fax: 978-992-0298

E-mail: info@cellsciences.com
Website: www.cellsciences.com