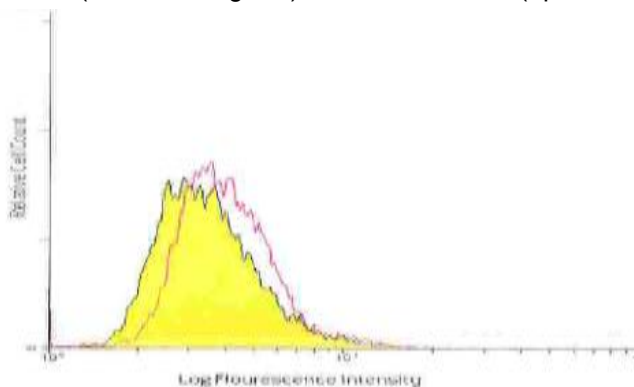


Mouse Anti-Human IFN-beta, Clone MMHB-3, FITC, mAb

Catalog No.	CM2048	Quantity:	≥20 µg
Description:	Mouse Anti-Human Interferon Beta antibody labeled with FITC.		
Concentration:	0.23 mg/ml		
Volume:	0.1 ml		
F/P Ratio:	5.941		
Host:	Mouse		
Immunogen:	Human interferon beta		
Isotype:	IgG, Kappa		
Clone:	MMHB-3		
Formulation:	Liquid in Phosphate buffered saline (PBS) containing 1% BSA and 0.05% Kathon as a preservative, pH 7.2.		
Applications:	Flow cytometry: 10 µl is sufficient for labeling of 1×10^6 cells in 100 µl total volume. Immunohistochemistry The optimal concentration should be determined by the user for each specific application.		
Storage & Stability:	Photo-sensitive material, protect from prolonged exposure to light. Store at 2-4°C. DO NOT FREEZE.		

Log Fluorescence Intensity-FITC Human IFN-beta
Expression of endogenous Human Interferon Beta in MG-63 fibroblast. Flow cytometry analysis on non-induced cells (closed histogram) and induced cells (open histogram).



NOT FOR HUMAN USE. FOR RESEARCH ONLY. NOT FOR DIAGNOSTIC OR THERAPEUTIC USE.

