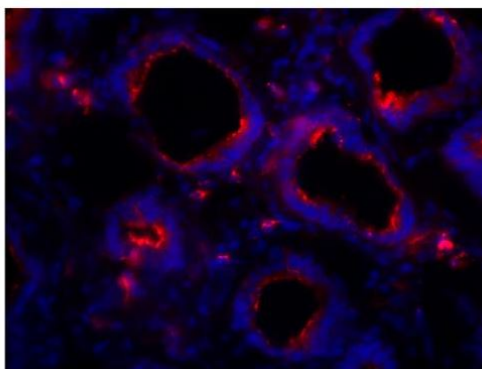


Mouse Anti-Chicken IgA Clone A-1 Biotin mAb

Catalog No.	CMF008	Quantity:	500 µg
Description:	Mouse Anti-Chicken IgA Clone A-1 Biotin mAb		
Concentration:	500 µg/mL		
Specificity:	Chicken IgA		
Immunogen:	Affinity purified chicken Ig or isolated lymphocytes		
Isotype:	Mouse (BALB/c) IgG _{2b} K		
Clone:	A-1		
Conjugate:	Biotin		
Formulation:	Liquid volume of 1.0 mL in a buffer of PBS/NaN ₃ .		
Isotype Control	Mouse IgG _{2b} -BIOT		
Applications:	Applications for relevant formats of this clone include ELISA, Flow Cytometry, Immunohistochemistry, Immunocytochemistry, and Immunoprecipitation.		
Application Notes:	Working dilutions; Flow cytometry ≤ 1 µg/10 ⁶ cells, Immunohistochemistry and Immunocytochemistry ≤ 10 µg/mL. Since applications vary, you should determine the optimum working dilution for the product that is appropriate for your specific need.		
Storage & Stability:	Store at 2-8°C. For long term storage at -20°C, aliquot into smaller volumes to avoid multiple freeze/thaw cycles.		

Chicken intestine tissue was stained with Mouse Anti-Chicken IgA-Biotin followed by Streptavidin-CY3.



NOT FOR HUMAN USE. FOR RESEARCH ONLY. NOT FOR DIAGNOSTIC OR THERAPEUTIC USE.