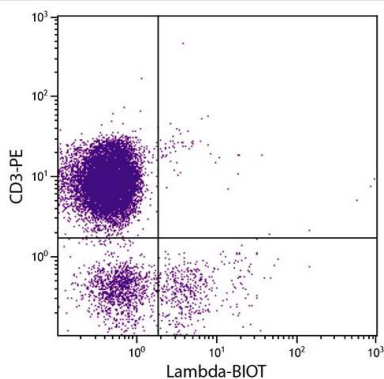


## Mouse Anti-Chicken Lambda Clone L-1 Biotin mAb

<b>Catalog No.</b>	CMF009	<b>Quantity:</b>	500 µg
<b>Description:</b>	Mouse Anti-Chicken Lambda Clone L-1 Biotin mAb		
<b>Concentration:</b>	500 µg/mL		
<b>Specificity:</b>	Chicken Lambda		
<b>Immunogen:</b>	Affinity purified chicken Ig or isolated lymphocytes		
<b>Isotype:</b>	Mouse (BALB/c) IgG <sub>1</sub> k		
<b>Clone:</b>	L-1		
<b>Conjugate:</b>	Biotin		
<b>Formulation:</b>	Liquid volume of 1.0 mL at concentration of 500 µg / ml in buffer of PBS/NaN <sub>3</sub> .		
<b>Isotype Control</b>	Mouse IgG <sub>1</sub> -Biotin		
<b>Applications:</b>	Applications for relevant formats of this clone include Flow Cytometry, Immunohistochemistry, Immunocytochemistry, Western Blot, and Immunoprecipitation.		
<b>Application Notes:</b>	Working dilutions; Flow Cytometry ≤ 1 µg/10 <sup>6</sup> cells. Since applications vary, you should determine the optimum working dilution for the product that is appropriate for your specific need.		
<b>Storage &amp; Stability:</b>	Store at 2-8°C. For long term storage at -20°C, aliquot into smaller volumes to avoid multiple freeze/thaw cycles.		

Chicken peripheral blood mononuclear cells were stained with Mouse Anti-Chicken Lambda-Biotin and Mouse Anti-Chicken CD3-PE followed by Streptavidin-FITC (Cat. No. CPO014).



**NOT FOR HUMAN USE. FOR RESEARCH ONLY. NOT FOR DIAGNOSTIC OR THERAPEUTIC USE.**