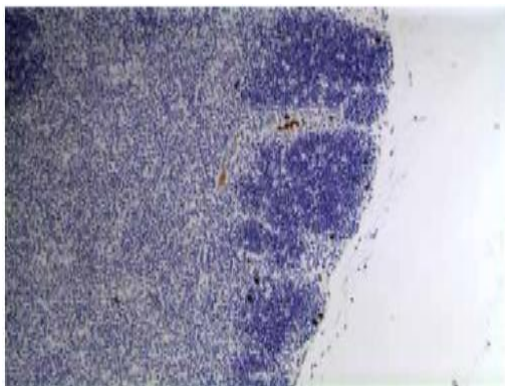


Rat Anti-Mouse L-Selectin Clone 12D6 mAb

Catalog No.	CML103	Quantity:	200 µg
Description:	Rat Anti-mouse L-Selectin, Clone 12D6 monoclonal antibody		
Alternate Names:	CD62L, LECAM-1, Lnhp, Ly-22, Ly-m22, Lyam-1, Lyam1		
Specificity:	Recognizes mouse L-Selectin		
Host:	Rat		
Immunogen:	Mouse B lymphocyte cells		
Isotype:	IgG2		
Clone:	12D6		
Formulation:	Lyophilized from a 0.2 µm sterile filtered solution in PBS		
Purification:	Protein A/G affinity chromatography		
Reconstitution:	Centrifuge vial prior to opening. Add 400 µl sterile distilled water to the vial to fully solubilize the antibody to a concentration of 500 µg/ml.		
Applications:	Flow Cytometry: working dilution of 1:100-1000 Immunohistochemistry (Paraffin): working dilution of 1:100-300 The optimal concentration should be determined by the user for each specific application.		
Storage & Stability:	Store lyophilized antibody at -80°C. Reconstituted antibody is stable for six months in working aliquots at -80°C. Avoid repeated freeze-thaw cycles.		

Formalin fixed and paraffin embedded mouse thymus tissue section was subjected to immunohistochemistry staining (ABC) of L-selectin using CML103.



NOT FOR HUMAN USE. FOR RESEARCH ONLY. NOT FOR DIAGNOSTIC OR THERAPEUTIC USE.

