

Rat Anti-Mouse IgG_{2a} Clone SB84a PE mAb

Catalog No.	CMM027	Quantity:	200 µg
Description:	Rat Anti-Mouse IgG _{2a} Clone SB84a PE mAb		
Concentration:	100 µg/mL		
Specificity:	Mouse IgG _{2a}		
Immunogen:	Mouse IgG _{2a} hybridoma		
Isotype:	Rat (Sprague Dawley) IgG ₁ κ		
Clone:	SB84a		
Conjugate:	PE (R-phycoerythrin)		
Formulation:	Liquid volume of 1.0 mL in a buffer of PBS/NaN ₃ and a stabilizing agent.		
Isotype Control	Rat IgG ₁ -PE		

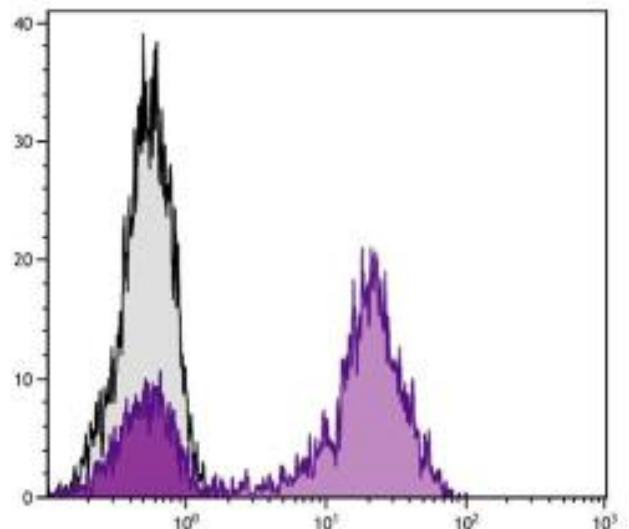
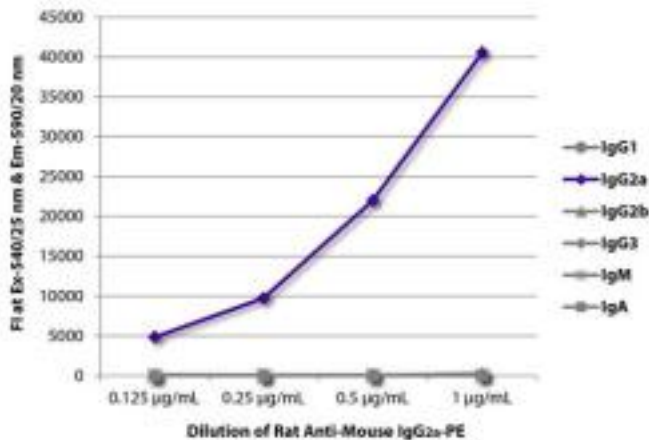
Applications: Applications for relevant formats of this clone include ELISA, Flow Cytometry, Immunohistochemistry, Immunocytochemistry, Western Blot, and Multiplex.

Application Notes: Working dilutions; FLISA ≤ 1 µg/mL. Since applications vary, you should determine the optimum working dilution for the product that is appropriate for your specific need.

Storage & Stability: Store at 2-8°C. DO NOT FREEZE

FLISA plate was coated with purified mouse IgG1, IgG2a, IgG2b, IgG3, IgM, and IgA. Immunoglobulins were detected with serially diluted Rat Anti-Mouse IgG2a-PE.

Human peripheral blood lymphocytes were stained with Mouse Anti-Human CD5 followed by Rat Anti-Mouse IgG2a-PE.



NOT FOR HUMAN USE. FOR RESEARCH ONLY. NOT FOR DIAGNOSTIC OR THERAPEUTIC USE.

