

## Mouse Anti-Rat IgG2a Clone 2A8F4 FITC mAb

**Catalog No.** CMR015 **Quantity:** 500 µg

**Description:** Mouse Anti-Rat IgG2a Clone 2A8F4 FITC mAb

**Concentration:** 500 µg/mL

**Specificity:** Rat IgG<sub>2a</sub>

**Immunogen:** Rat IgG<sub>2a</sub> hybridoma

**Isotype:** Mouse (BALB/c) IgG<sub>1κ</sub>

**Clone:** 2A8F4

**Conjugate:** FITC (Fluorescein)

**Formulation:** Liquid volume of 1.0 mL in a buffer of PBS/NaN<sub>3</sub>

**Isotype Control** Mouse IgG<sub>1</sub>-FITC

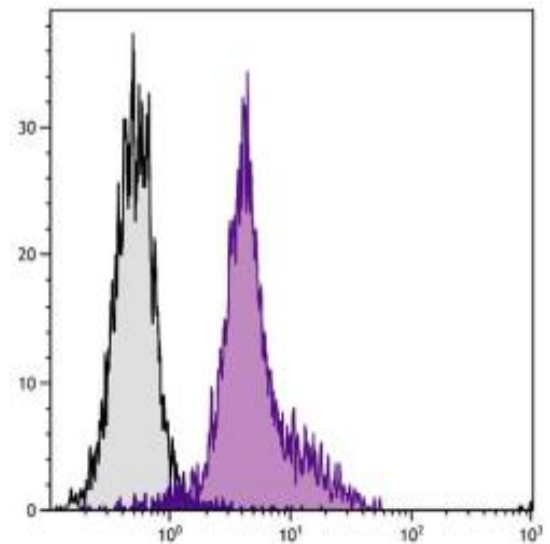
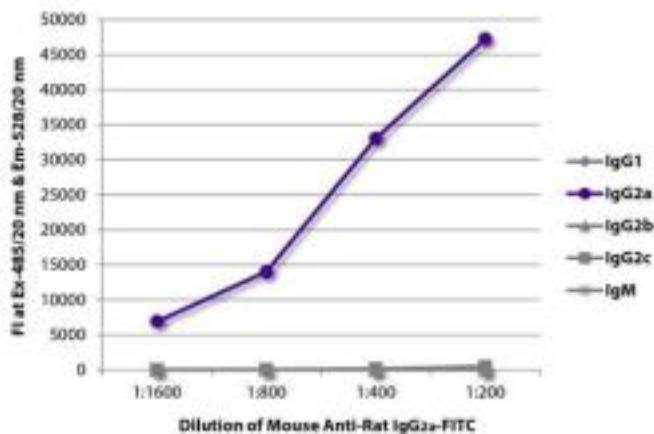
**Applications:** Applications include ELISA, FLISA, Flow Cytometry, ELISPOT and Immunohistochemistry.

**Application Notes:** Working dilutions; FLISA 1:200 - 1:400, Flow Cytometry ≤ 1 µg/10<sup>6</sup> cells. Since applications vary, you should determine the optimum working dilution for the product that is appropriate for your specific need.

**Storage & Stability:** Store at 2-8°C. For long term storage at -20°C, aliquot into smaller volumes to avoid multiple freeze/thaw cycles.

FLISA plate was coated with purified rat IgG1, IgG2a, IgG2b, IgG2c, and IgM. Immunoglobulins were detected with serially diluted Mouse Anti-Rat IgG2a-FITC.

BALB/c mouse splenocytes were stained with Rat Anti-Mouse CD11a-UNLB followed by Mouse Anti-Rat IgG2a-FITC.



NOT FOR HUMAN USE. FOR RESEARCH ONLY. NOT FOR DIAGNOSTIC OR THERAPEUTIC USE.



**Cell Sciences®**  
65 Parker Street  
Unit 11  
Newburyport, MA 01950

Toll Free: 888-769-1246  
Phone: 978-572-1070  
Fax: 978-992-0298

E-mail: [info@cellsciences.com](mailto:info@cellsciences.com)  
Website: [www.cellsciences.com](http://www.cellsciences.com)