

Mouse Anti-Rat IgM Clone M2A1 FITC mAb

Catalog No.	CMR026	Quantity:	500 µg
Description:	Mouse Anti-Rat IgM Clone M2A1 FITC mAb		
Concentration:	500 µg/mL		
Specificity:	Rat IgM		
Immunogen:	Rat IgM hybridoma		
Isotype:	Mouse (BALB/c) IgG ₁ κ		
Clone:	M2A1		
Conjugate:	FITC (Fluorescein)		
Formulation:	Liquid volume of 1.0 mL in in PBS/NaN ₃ .		
Isotype Control	Mouse IgG ₁ -FITC		

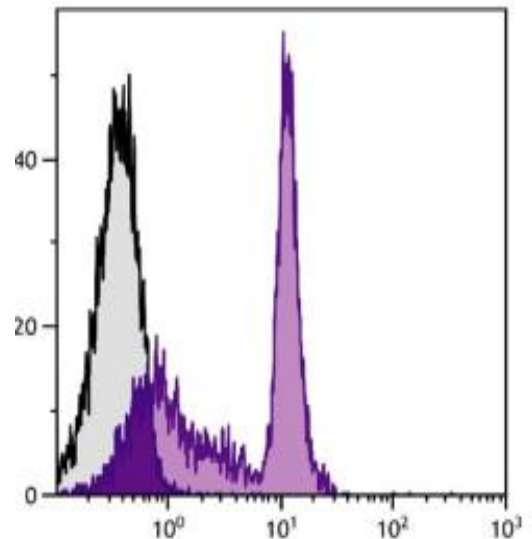
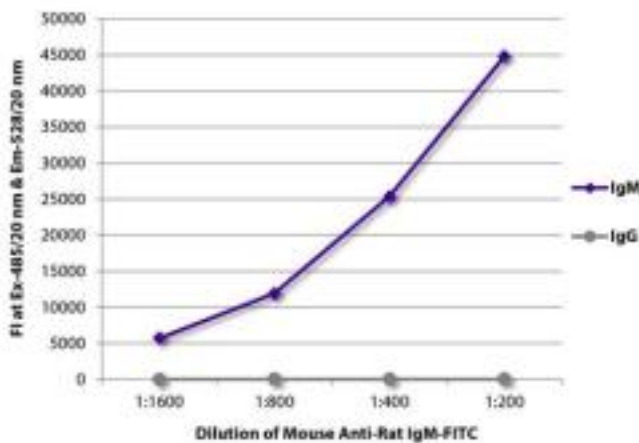
Applications: Applications for relevant formats of this clone include FLISA, Flow Cytometry, Immunohistochemistry and Immunocytochemistry.

Application Notes: Working dilution for FLISA 1:200 - 1:400, for Flow Cytometry ≤ 1 µg/10⁶ cells. Since applications vary, you should determine the optimum working dilution for the product that is appropriate for your specific need.

Storage & Stability: Store at 2-8°C. **DO NOT FREEZE**

FLISA plate was coated with purified rat IgM and IgG. Immunoglobulins were detected with serially diluted Mouse Anti-Rat IgM-FITC.

BALB/c mouse splenocytes were stained with Rat Anti-Mouse CD45RC-UNLB (Isotype - Rat IgM) followed by Mouse Anti-Rat IgM-FITC.



NOT FOR HUMAN USE. FOR RESEARCH ONLY. NOT FOR DIAGNOSTIC OR THERAPEUTIC USE.

