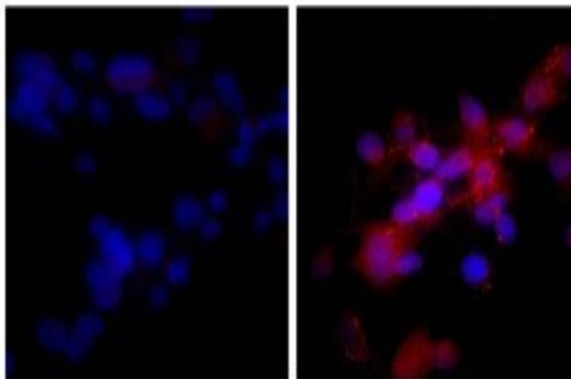


Donkey Anti-Rabbit IgG (H+L) (Ads) Biotin

Catalog No.	CPB017	Quantity:	1.0 mg
Description:	Donkey Anti-Rabbit IgG(H+L) (Ads) Biotin. Pooled antisera from donkeys hyperimmunized with rabbit IgG. Cross adsorbed on mouse, rat and human serum proteins. Purified by affinity chromatography on rabbit IgG covalently linked to agarose.		
Concentration:	500 µg/mL		
Specificity:	Reacts with the heavy and light chains of rabbit IgG and the light chains of rabbit IgM		
Isotype:	Donkey IgG		
Conjugate:	Biotin		
Formulation:	Liquid volume of 2.0 mL in a buffer of PBS/NaN ₃		
Isotype Control:	Donkey IgG-Biotin		
Cross-Reactivity:	May react with immunoglobulins from other species and the light chains of other rabbit immunoglobulins		
Applications:	ELISA		
Application Notes:	Working dilution for ELISA 1:5,000 - 1:20,00. Since applications vary, you should determine the optimum working dilution for the product that is appropriate for your specific need.		
Storage & Stability:	Store at 2-8°C. □ For long term storage at -20°C, aliquot into smaller volumes to avoid multiple freeze/thaw cycles.		

Human hepatocellular carcinoma cell line Hep G2 was stained with Rabbit Anti-Human DR5 (right) and Rabbit IgG (left) followed by Donkey Anti-Rabbit IgG(H+L) (Ads) BIOT , Streptavidin-CY3 and DAPI.



NOT FOR HUMAN USE. FOR RESEARCH ONLY. NOT FOR DIAGNOSTIC OR THERAPEUTIC USE.

