

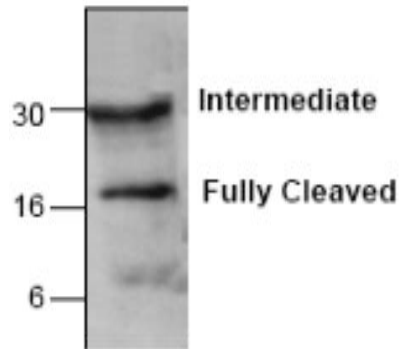
CASP5

Rabbit Anti-Human Caspase 5 Apoptosis-Related Cysteine Peptidase Affinity Purified pAb

Catalog No.	CPC113	Quantity:	100 µg
Alternate Names:	Caspase 5, ICE(rel)III, ICEREL-III, ICH-3		
Gene ID:	838		
Description:	Rabbit Anti-Human Caspase 5 Affinity Purified polyclonal antibody. Caspase family of cysteine proteases has been shown to play a key role in apoptosis. Caspase 5 can be proteolytically processed by granzyme B. Over expression of caspase 5 induces apoptosis in Rat-1 and HeLa cells, which can be inhibited by CrmA and BCL2.		
Concentration:	0.2 mg/ml		
Specificity:	Preferentially detects the intermediate (32 kDa) and the fully cleaved (20 kDa) caspase 5.		
Host:	Rabbit		
Immunogen:	Synthetic peptide surrounding amino acid 162 of human caspase 5		
Formulation:	Liquid in PBS, pH 7.2 + 30% glycerol + 0.5% BSA + 0.01% thimerosal. Precaution: Thimerosal is a poisonous and hazardous substance which should be handled by trained staff only.		
Purification:	Biospecific affinity chromatography		
Cross-Reactivity:	Reacts with human, mouse, rat, rabbit, monkey, cow, and hamster.		
Applications:	Western Blot		
Application Notes:	For Western Blot, use at a working dilution of 0.5-4 µg/ml. Blocking Peptide (Cat. No. CPC113BP) is available separately. The optimal concentration should be determined by the user for each specific application.		
Storage & Stability:	Store at -20°C or in working aliquots at -80°C for long term storage. Avoid repeated freeze-thaw cycles.		



Western blot analysis of Caspase 5 in rat kidney tissue lysate. Caspase 5 intermediate (30 kDa) and fully cleaved (20 kDa) fragments were detected.



NOT FOR HUMAN USE. FOR RESEARCH ONLY. NOT FOR DIAGNOSTIC OR THERAPEUTIC USE.