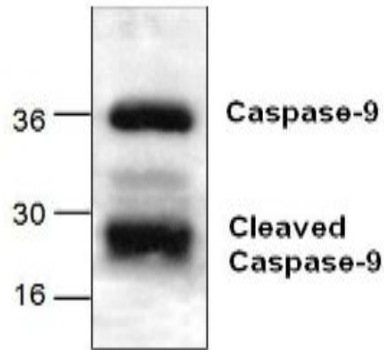


CASP9

Rabbit Anti-Human Caspase-9 Affinity Purified pAb

Catalog No.	CPC122	Quantity:	100 µg
Alternate Names:	Caspase-9, CASP-9, Apoptotic protease Mch-6, Apoptotic protease-activating factor 3, APAF-3, ICE-like apoptotic protease, ICE-LAP6		
Description:	Caspase-9 is one of the most important caspases among the caspase family members. Caspase-9 is synthesized as inactive pro-enzyme that is processed in cells undergoing apoptosis. The processed caspase-9 consists of large (32-35 kD) and small (10 kD) subunits which associate to form an active enzyme. Activated caspase-9 in turn cleaves and activates caspase-3, one of the proteases responsible for the proteolytic cleavage of many key proteins in apoptosis.		
Uniprot ID:	P55211		
Gene ID:	842		
Concentration:	0.5 mg/ml		
Specificity:	Recognizes proform (~46 kDa), intermediate (~33-36 kDa), and the fully cleaved (~20-25 kDa) caspase-9.		
Host:	Rabbit		
Immunogen:	Synthetic peptide surrounding amino acid 290 of human caspase-9		
Formulation:	PBS pH 7.2, containing 30% glycerol, 0.5% BSA, 5 mM EDTA and 0.03% Proclin		
Purification:	Biospecific affinity chromatography		
Cross-Reactivity:	Mouse, rat, hamster, bovine, rabbit, pig		
Application Notes:	Western Blot: use at 0.5-4 µg/ml The optimal concentration should be determined by the user for each specific application.		
Storage & Stability:	Store in working aliquots at -20°C to -80°C for up to 1 year. Avoid repeated freeze-thaw cycles.		





NOT FOR HUMAN USE. FOR RESEARCH ONLY. NOT FOR DIAGNOSTIC OR THERAPEUTIC USE.



Cell Sciences®
65 Parker Street
Unit 11
Newburyport, MA 01950

Toll Free: 888-769-1246
Phone: 978-572-1070
Fax: 978-992-0298

E-mail: info@cellsciences.com
Website: www.cellsciences.com