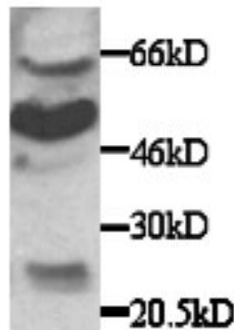


CX3CR1

Rabbit Anti-Human CX3CR1 pAb

Catalog No.	CPC200	Quantity:	200 µg
Alternate Names:	CX3C chemokine receptor 1, Beta chemokine receptor-like 1, Fractalkine receptor, CMK-BLR-1, G-protein coupled receptor 13, V28		
Description:	Fractalkine, also termed neurotactin, is a membrane-bound CX3C chemokine. Human CX3CR1, a G-protein coupled seven-transmembrane domain receptor, was identified to serve as a fractalkine receptor. Human CX3CR1 has been shown to mediate both the adhesive and migratory functions of fractalkine. Fractalkine and CX3CR1 represent new types of leukocyte trafficking regulators.		
Immunogen:	<i>E. coli</i> -expressed human CX3CR1 amino terminal domain		
UniProt ID:	P49238		
Host:	Rabbit		
Isotype:	IgG		
Specificity:	Reacts with recombinant and native human and rat CX3CR1		
Formulation:	Lyophilized with 0.05% sodium azide. PPE is recommended when working with products containing sodium azide.		
Purification:	Protein A affinity chromatography		
Reconstitution:	Centrifuge vial prior to opening. Add 200 µL sterile distilled water to the vial to fully solubilize the antibody to a concentration of 1.0 mg/mL.		
Application Notes:	<p>Western Blot: suggested working dilution of 1:1,000-1:2,000.</p> <p>Neutralization (chemotaxis assay): suggested working dilution of 15 µg/mL.</p> <p>Immunohistochemistry: suggested working dilution of 1:100-1:500.</p> <p>The optimal concentration should be determined by the user for each specific application.</p>		
Storage & Stability:	Store as supplied at 2-8°C for short term. Prepare working aliquots and store at -20°C to -80°C for up to 1 year. Avoid repeated freeze-thaw cycles.		

Western blot detection of CX3CR1 in brain lysate using CPC200, rabbit anti-Human CX3CR1



NOT FOR HUMAN USE. FOR RESEARCH ONLY. NOT FOR DIAGNOSTIC OR THERAPEUTIC USE.