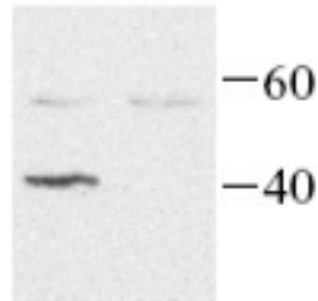


GNAI2

Rabbit Anti-Human GNAI2 pAb

Catalog No.	CPG201	Quantity:	200 µg
Alternate Names:	Guanine nucleotide-binding protein G(i) subunit alpha-2, Adenylate cyclase-inhibiting G alpha protein		
Description:	<p>Gαi2 is a 40-41 kDa alpha-subunit of heterotrimeric protein, that shares sequence homology with Gαi3 and Gαi1. All these G proteins can be ADP-ribosylated at the carboxy terminal Cys of the CAAX sequence, interfering with receptor coupling. Gαi2 is expressed widely in tissues and cell lines. Activation of PLC-β by Gαi-coupled receptors is the result of release of G$\beta\gamma$ subunits from Gαi. Gαi2 regulates potassium channel activation. Mutation at Arg¹⁷⁹ has been identified in tumors. This and the Q205L mutant inhibit adenylyl cyclase.</p>		
Immunogen:	<i>E. coli</i> -expressed human G α i2 (a.a. 231-351)		
UniProt ID:	P04899		
Gene ID:	2771		
Host:	Rabbit		
Isotype:	IgG		
Specificity:	Human G α i2		
Cross-Reactivity:	Cross-reacts with G α i ₃ , and partially with G α i ₁ .		
Formulation:	Lyophilized with 0.1% sodium azide. Precaution: Sodium azide is a poisonous and hazardous substance which should be handled by trained staff only.		
Reconstitution:	Centrifuge vial prior to opening. Add 200 µl PBS to the vial to fully solubilize the antibody to a concentration of 1 mg/ml.		
Applications:	Western Blot: working dilution of 1:5,000 Immunoprecipitation The optimal concentration should be determined by the user for each specific application.		
Storage & Stability:	Store at 2-8°C for short term or in working aliquots at -20°C to -80°C for long term storage. Avoid repeated freeze-thaw cycles.		

Human Gai2 detected by Western blot in transfected HEK293
cells.
(left lane)



NOT FOR HUMAN USE. FOR RESEARCH ONLY. NOT FOR DIAGNOSTIC OR THERAPEUTIC USE.



Cell Sciences®
65 Parker Street
Unit 11
Newburyport, MA 01950

Toll Free: 888-769-1246
Phone: 978-572-1070
Fax: 978-992-0298

E-mail: info@cellsciences.com
Website: www.cellsciences.com