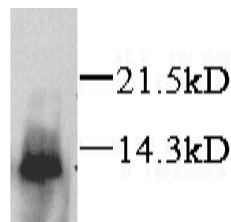


## Xcl1

### Rabbit Anti-Mouse Lymphotactin pAb

<b>Catalog No.</b>	CPL100	<b>Quantity:</b>	200 µg
<b>Alternate Names:</b>	C motif chemokine 1, Cytokine SCM-1, Small-inducible cytokine C1		
<b>Description:</b>	Lymphotactin is the only C chemokine so far identified which has a single cysteine residue near the amino terminus. It has 114 amino acids with a 22 amino acids signal peptide. It is produced in activated CD8+ T cells <sup>1</sup> and NK cell <sup>2</sup> . Lymphotactin attracts both T lymphocytes and NK cells.		
<b>UniProt ID:</b>	P47993		
<b>Gene ID:</b>	16963		
<b>Specificity:</b>	Mouse Lymphotactin		
<b>Host:</b>	Rabbit		
<b>Immunogen:</b>	<i>E. coli</i> -expressed mature mouse lymphotactin ( aa 1-92)		
<b>Isotype:</b>	IgG		
<b>Formulation:</b>	Lyophilized from PBS, 0.1% azide. PPE is recommended when working with products containing sodium azid		
<b>Purification:</b>	Protein A affinity chromatography		
<b>Reconstitution:</b>	<b>Centrifuge vial prior to opening.</b> Add 200 µl sterile, distilled water for a final concentration of 1 mg/ml.		
<b>Cross-Reactivity:</b>	Cross-reactivity to lymphotactin of other species has not been determined.		
<b>Applications:</b>	<b>Neutralizing</b> <b>Western blot:</b> suggested dilution 1:2,000 <b>Immunoprecipitation:</b> suggested dilution 1:500. The optimal concentration should be determined by the user for each specific application.		
<b>Storage &amp; Stability:</b>	2-8°C for short term storage or -20°C to -80°C in working aliquots for long term storage. <b>Avoid repeated freeze and thaw cycles.</b>		



Detection of mouse lymphotactin in transfected cells by Western blot

NOT FOR HUMAN USE. FOR RESEARCH ONLY. NOT FOR DIAGNOSTIC OR THERAPEUTIC USE.