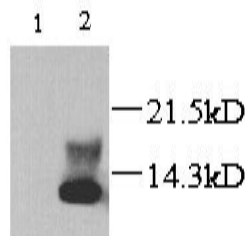


## Xcl1

### Rabbit Anti-Rat Lymphotactin pAb

<b>Catalog No.</b>	CPL101	<b>Quantity:</b>	200 µg
<b>Alternate Names:</b>	C motif chemokine 1, Cytokine SCM-1, Small-inducible cytokine C1		
<b>Description:</b>	Lymphotactin (Ltn) is the only C chemokine so far identified that has a single cysteine near the amino terminus. It has 114 amino acids with a 22-amino acid signal peptide. Lymphotactin is produced in activated CD8+ T cells <sup>1</sup> and NK cell <sup>2</sup> . Lymphotactin attracts both T-lymphocytes and NK cells.		
<b>UniProt ID:</b>	P51672		
<b>Gene ID:</b>	171371		
<b>Specificity:</b>	Rat lymphotactin		
<b>Host:</b>	Rabbit		
<b>Immunogen:</b>	E. coli-expressed (aa 1-92) mature rat lymphotactin		
<b>Isotype:</b>	IgG		
<b>Formulation:</b>	Lyophilized from PBS, 0.1% azide. PPE is recommended when working with products containing sodium azide.		
<b>Reconstitution:</b>	Centrifuge vial prior to opening. Reconstitute to 1 mg/ml by adding 200 µl H <sub>2</sub> O.		
<b>Cross-Reactivity:</b>	Cross-reactivity to lymphotactin of other species has not been determined.		
<b>Applications:</b>	<p><b>Neutralizing</b></p> <p><b>Western blot:</b> suggested dilution 1:2,000</p> <p><b>Immunoprecipitation:</b> suggested dilution 1:500.</p> <p>The optimal concentration should be determined by the user for each specific application.</p>		
<b>Storage &amp; Stability:</b>	2-8°C for short term storage or -20°C to -80°C working aliquots for long term storage. <b>Avoid repeated freeze and thaw cycles.</b>		



Rat lymphotactin detected by Western blot in untransfected (1) and transfected (2) cells

NOT FOR HUMAN USE. FOR RESEARCH ONLY. NOT FOR DIAGNOSTIC OR THERAPEUTIC USE.

