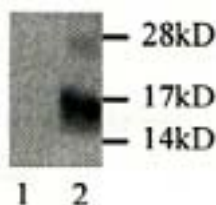


Ccl2

Rabbit Anti-Rat MCP-1/CCL2 (aa 1-73) pAb

Catalog No.	CPM001	Quantity:	500 µg
Alternate Names:	MCP-1, Scya2, Sigje		
Description:	The polyclonal antibody recognizes Rat MCP-1/CCL2, a member of the CC subfamily of chemokines involved in immunoregulation and inflammatory processes, characterized by two adjacent cysteine residues. This cytokine displays chemotactic activity for monocytes, lymphocytes and basophils, but not for neutrophils. Rat MCP-1 is extensively O-glycosylated, with an apparent weight of 25 kDa.		
Conjugate:	Unconjugated		
Specificity:	Rat MCP-1 N-terminal domain (aa1-73)		
Host:	Rabbit		
Isotype:	IgG		
Immunogen:	Recombinant N-terminal of Rat MCP-1 (aa 1-73), expressed in <i>E. coli</i> .		
Formulation:	Lyophilized with 0.05% Sodium Azide.		
Purification:	Protein A purified		
Reconstitution:	Centrifuge vial prior to opening. Add 500 µL sterile distilled water to the vial to fully solubilize the antibody to a concentration of 1 mg/mL.		
Cross-Reactivity:	Reacts with both mouse and rat MCP-1. Cross-reactivity to MCP-1 of other species has not been determined.		
Applications:	Western Blot , Immunohistochemistry , Neutralization		
Application Notes:	For Western Blot use a working dilution of 1:2,000. For Immunohistochemistry use a working dilution of 1:200. The optimal concentration should be determined by the user for each specific application.		
Storage & Stability:	Store at 2-8 °C short term and in working aliquots at -20 °C for long term storage. Avoid repeated freeze-thaw cycles.		

Western Blot detection of rat MCP-1 in control (1) and transfected cells (2)



NOT FOR HUMAN USE. FOR RESEARCH ONLY. NOT FOR DIAGNOSTIC OR THERAPEUTIC USE.

