

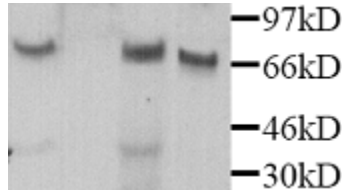
Mpeg1

Rabbit Anti-Rat Macrophage Expressed Gene 1 pAb

Catalog No.	CPM700	Quantity:	200 µg
Alternate Names:	Mpg-1, Macrophage-specific gene, MSG, MPS1		
Description:	<p>The rabbit polyclonal antibody recognizes rat Macrophage Expressed Gene 1 (Mpg-1). Transcripts of Mpg-1 are found at a high level in mature human and mouse macrophages, and at a moderate level in certain myelomonocytic cell lines. Mpg-1-specific transcript was not detected in a wide variety of other tissues and cell lines. The predicted 669-amino acid Mpg-1-encoded protein has potential glycosylation and phosphorylation sites in addition to a signal sequence. The predicted molecular weight of the core protein is 71 to 74 kDa. Mpg-1 may share a distant ancestry to perforin. The function of Mpg-1 is unknown.</p>		
Gene ID:	64552		
UniProtKB:	Q9WV57		
Conjugate:	Unconjugated		
Specificity:	Rat Mpg-1		
Host:	Rabbit		
Immunogen:	Recombinant rat Mpg-1 from <i>E. coli</i>		
Isotype:	IgG		
Formulation:	Lyophilized with 0.05% Sodium Azide.		
Purification:	Protein A affinity purification		
Reconstitution:	Centrifuge vial prior to opening. Add 200 µL sterile distilled water to the vial to fully solubilize the antibody.		
Cross-Reactivity:	Antibody will recognize mouse Mpg-1		
Applications:	WB		
Application Notes:	WB: use a working dilution of 1:2000. The optimal concentration should be determined by the user for each specific application.		
Storage & Stability:	Store at 2-4 °C for up to one month or in working aliquots at -20 °C for up to one year. Avoid repeated freeze-thaw cycles.		
Statement:	PPE is recommended when working with products containing sodium azide.		



rat spleen and (4) lysate of rMpg-1 transfected cells.



NOT FOR HUMAN USE. FOR RESEARCH ONLY. NOT FOR DIAGNOSTIC OR THERAPEUTIC USE.