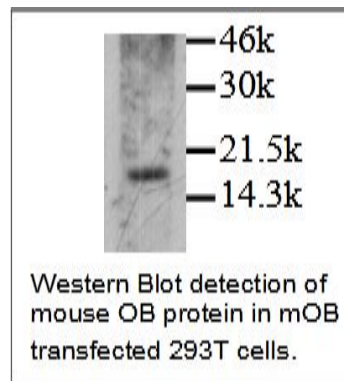


Lep

Rabbit Anti-Mouse Leptin pAb

Catalog No.	CPO001	Quantity:	500 µg
Alternate Names:	OB, Obese, Obesity factor, Obesity protein, OBS		
Description:	The rabbit polyclonal antibody recognizes mouse leptin, a 16 kDa protein produced primarily in white adipose tissue, but also in brown fat and the placenta. Leptin plays a major role in the regulation of body weight and adipose mass, through regulation of food intake, energy expenditure, and whole-body energy balance, in rodents and humans. In addition to its metabolic control role, leptin also plays important roles in reproduction, neuroendocrine signaling, and various immunological responses.		
Gene ID:	16846		
UniProt ID:	P41160		
Specificity:	Recombinant and native mouse leptin		
Host:	Rabbit		
Immunogen:	Recombinant <i>E. coli</i> expressed leptin		
Isotype:	IgG		
Formulation:	Lyophilized with 0.1% sodium azide.		
Purification:	Protein A affinity chromatography		
Reconstitution:	Centrifuge vial prior to opening. Reconstitute to 1 mg/mL by adding 500 µL PBS		
Cross-Reactivity:	Cross-reactivity to leptin of additional species has not been determined.		
Applications:	Western blot: working dilution of 1:2,000. The optimal concentration should be determined by the user for each specific application.		
Storage & Stability:	Upon receipt store at 2-8 °C. For long term store in working aliquots at -20 °C. Avoid repeated freeze-thaw cycles.		



NOT FOR HUMAN USE. FOR RESEARCH ONLY. NOT FOR DIAGNOSTIC OR THERAPEUTIC USE.

