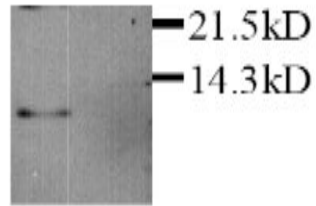


Ccl5

Rabbit Anti-Rat RANTES / CCL5 pAb

Catalog No.	CPR000	Quantity:	0.5 mg
Alternate Names:	C-C motif chemokine 5, SIS-delta, Small-inducible cytokine A5, T-cell-specific protein RANTES		
Description:	RANTES (regulated upon activation, normal T-cell expressed and secreted) is a 70-amino acid C-C motif chemokine originally cloned from T cell-specific sequences-enriched cDNA libraries. Both human and murine RANTES are chemotactic for monocytes. Human RANTES is also a chemoattractant for T cells and eosinophils, as well as an activator of basophils for histamine release. In contrast to other C-C motif chemokines, RANTES is only slowly expressed after activation of leukocytes. It is involved in a number of pathological conditions like chronic inflammation and autoimmune diseases.		
UniProt ID:	P50231		
Specificity:	Rat and mouse RANTES		
Host:	Rabbit		
Immunogen:	<i>E. coli</i> -expressed mature rat RANTES (aa 1-70)		
Isotype:	IgG		
Formulation:	Lyophilized with 0.1% Sodium Azide. PPE is recommended when working with products containing sodium azide.		
Purification:	Protein A affinity chromatography		
Reconstitution:	Centrifuge vial prior to opening. Reconstitute to 1 mg/ml by adding 500 µl water.		
Cross-Reactivity:	Cross-reactivity to RANTES of other species has not been determined.		
Applications:	Western blot: suggested dilution 1:2,000 Immunohistochemistry: suggested dilution 1:100 The optimal concentration should be determined by the user for each specific application.		
Storage & Stability:	Store at 2-8°C for short term storage or in working aliquots at -20°C for long term storage. Avoid repeated freeze-thaw cycles.		



Rat RANTES detected by
Western blot in RAW264.7
cells treated with LPS (15 h).
1, lysate; 2, supernatant

NOT FOR HUMAN USE. FOR RESEARCH ONLY. NOT FOR DIAGNOSTIC OR THERAPEUTIC USE.



Cell Sciences®
65 Parker Street
Unit 11
Newburyport, MA 01950

Toll Free: 888-769-1246
Phone: 978-572-1070
Fax: 978-992-0298

E-mail: info@cellsciences.com
Website: www.cellsciences.com