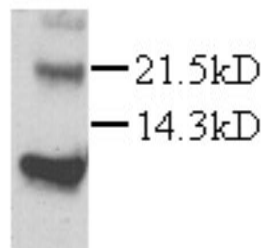


Cxcl12

Rabbit Anti-Mouse SDF-1 alpha / CXCL12 pAb

Catalog No.	CPS000	Quantity:	200 µg
Alternate Names:	Stromal cell-derived factor 1 alpha, C-X-C motif chemokine 12, Pre-B-cell Growth Stimulating Factor, PBSF, Thymic lymphoma cell-stimulating factor, TLSF, TPAR1		
Description:	The rabbit polyclonal antibody recognizes mouse SDF-1α (stromal cell-derived factor-α), also known as pre-B-cell growth stimulating factor (PBSF). SDF-1α is a 70-amino acid CXC chemokine originally cloned from a bone marrow stromal cell line. Targeted deletion of SDF-1 gene resulted in defects of B-cell lymphopoiesis and bone marrow myelopoiesis. SDF-1 has been shown to be chemotactic for lymphocytes. In addition, SDF-1 was recently reported to be a ligand for CXCR4 (LESTR/fusin), a co-receptor for HIV-1 entry into T cells. SDF-1 binding to CXCR4 inhibits HIV-1 entry.		
UniProt ID:	P40224		
Conjugate:	Unconjugated		
Specificity:	Mouse SDF-1 α		
Host:	Rabbit		
Immunogen:	<i>E. coli</i> -expressed mouse SDF-1 α		
Isotype:	IgG		
Formulation:	Lyophilized with 0.1% sodium azide.		
Purification:	Protein A affinity chromatography		
Reconstitution:	Centrifuge vial prior to opening. Add 200 µL sterile distilled water to the vial to fully solubilize the antibody to a concentration of 1.0 mg/mL.		
Cross-Reactivity:	Reacts with both mouse and rat SDF-1 α.		
Application Notes:	Western Blot: working dilution of 1:1,000. Immunohistochemistry: working dilution of 1:100-1:500. The optimal concentration should be determined by the user for each application.		
Storage & Stability:	Store at 2-8°C for short term or in working aliquots at -20°C to -80°C for long term storage. Avoid repeated freeze-thaw cycles.		

Detection of mouse recombinant SDF-1α by Western Blot



NOT FOR HUMAN USE. FOR RESEARCH ONLY. NOT FOR DIAGNOSTIC OR THERAPEUTIC USE.