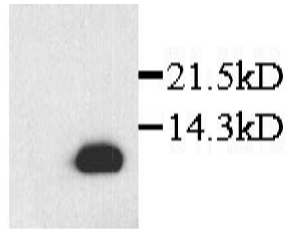


Cxcl12

Rabbit Anti-Rat CXCL12/SDF-1 beta pAb

Catalog No.	CPS001	Quantity:	200 µg
Alternate Names:	Sdf1, SDF-1 gamma, Stromal cell-derived factor 1, chemokine (C-X-C motif) ligand 12, stromal cell-derived factor-1 gamma		
Description:	SDF-1 beta (stromal cell-derived factor-beta), also known as pre-B-cell growth-stimulating factor (PBSF), is a 70-amino acid CXC chemokine originally cloned from a bone marrow stromal cell line. Targeted deletion of SDF-1 gene resulted in defects of B-cell lymphopoiesis and bone marrow myelopoiesis in mice. SDF-1 has been shown to be chemotactic for lymphocytes. In addition, SDF-1 was recently reported to be a ligand for CXCR4 (LESTR/fusin), a co-receptor for HIV-1 entry into T-cells. SDF-1 binding to CXCR4 inhibits HIV-1 entry. This polyclonal antibody, which reacts with both mouse and rat SDF-1β, was generated using E. coli-expressed mouse SDF-1β as an immunogen.		
Gene ID:	24772		
Specificity:	Rat SDF-1 beta		
Host:	Rabbit		
Immunogen:	Recombinant mouse SDF-1 beta		
Isotype:	IgG		
Formulation:	Lyophilized with 0.1% sodium azide. Precaution: Sodium azide is a poisonous and hazardous substance which should be handled by trained staff only.		
Purification:	Protein A purified		
Reconstitution:	Centrifuge vial prior to opening. Reconstitute to 1 mg/ml by adding 200 µl H ₂ O.		
Cross-Reactivity:	Reacts with both mouse and rat SDF-1β. Cross-reactivity to SDF-1β in other species has not been determined.		
Applications:	Western blot: working dilution of 1:1,000 Immunoprecipitation: working dilution of 1:300-500 immunohistochemistry: working dilution of 1:100-500. The optimal concentration should be determined by the user for each specific application.		
Storage & Stability:	2-4°C for short term storage or -20°C in small aliquots for long term storage. Avoid repeated freeze-thaw cycles.		





Detection of rat
recombinant SDF-1 β
in transfected cells
by Western blot

NOT FOR HUMAN USE. FOR RESEARCH ONLY. NOT FOR DIAGNOSTIC OR THERAPEUTIC USE.