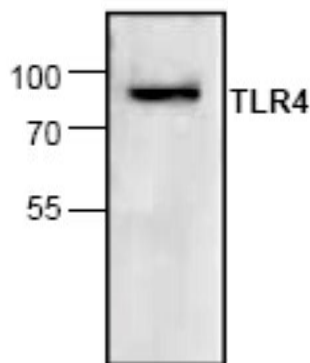


Tlr4

Rabbit Anti-Rat Toll-Like Receptor 4 Affinity Purified pAb

| | | | |
|---------------------------------|--|------------------|--------|
| Catalog No. | CPT114 | Quantity: | 100 µg |
| Alternate Names: | CD284, ARMD10, TOLL | | |
| Gene ID: | 29260 | | |
| Description: | Rabbit Anti-Rat TLR4 Affinity Purified polyclonal antibody. TLR4 is a mammalian homologue of the <i>Drosophila</i> toll protein. The human TLR4 is a type-1 transmembrane protein containing 799 amino acid residues. The extracellular domain has leucine-rich repeats and the intracellular domain is similar to that of IL1 receptor. TLR4 is a receptor for lipopolysaccharide (LPS). In mice that are genetically tolerant to endotoxin, mutations have been identified in the intracellular domain of TLR4 that abolish LPS responsiveness. TLR4 uses a mechanism similar to that of the IL1 receptor for signal transduction that leads to activation of NF-κB. | | |
| Concentration: | 0.5 mg/ml | | |
| Specificity: | Recognizes ~92 kDa rat TLR4 | | |
| Host: | Rabbit | | |
| Immunogen: | Synthetic peptide corresponding to residues surrounding amino acids 819 or rat TLR4 | | |
| Formulation: | Liquid in PBS, pH 7.2 + 30% glycerol + 0.5% BSA + 0.01% thimerosal. Precaution: Thimerosal is a poisonous and hazardous substance which should be handled by trained staff only. | | |
| Purification: | Biospecific affinity chromatography | | |
| Applications: | Western Blot | | |
| Application Notes: | For Western Blot use a working dilution of 0.5-4 µg/ml. The optimal concentration should be determined by the user for each specific application. | | |
| Storage & Stability: | Store at -20°C or in working aliquots at -80°C for long term storage. Avoid repeated freeze-thaw cycles. | | |

Western Blot analysis of TLR4 in rat kidney tissue lysate



NOT FOR HUMAN USE. FOR RESEARCH ONLY. NOT FOR DIAGNOSTIC OR THERAPEUTIC USE.

