

BMP2

Recombinant Human/Mouse/Rat Bone Morphogenetic Protein 2, Animal Free

Catalog No.	CRB100A-AF	Quantity:	2 µg
	CRB100B-AF		10 µg
	CRB100C-AF		1.0 mg
	CRB100D-AF		100 µg

Alternate Names: BMP2A, bone morphogenetic protein 2

Description: Bone Morphogenetic Protein 2 is a member of the BMP family of proteins, which are important for the development of bone and cartilage. BMP-2 through 7 belong to the TGF-beta superfamily. BMP-2 is produced as a pre/pro-protein, which is proteolytically processed to generate each subunit of the disulfide-linked homodimer, BMPs signal through type I and type II receptor tyrosine kinases and through SMAD proteins. Recombinant Human BMP-2 is a homodimer with 100% sequence homology with mouse and rat BMP-2.

Gene ID: 650 human

Protein Accession No: P12643 human

Source: *E. coli*

Molecular Weight: Dimer, 13.0/26.1 kDa (115 aa/330 aa)

Formulation: Lyophilized from a sterile-filtered solution containing 0.1% Trifluoroacetic Acid (TFA).

Purity: ≥95% by reducing and non-reducing SDS-PAGE.

Endotoxin Level: ≤1 EU/µg, determined by kinetic LAL analysis.

Biological Activity: ≤ 250 ng/ml, determined by induced alkaline phosphatase activity in mouse ATDC-5 cells.

Specific Activity: ≥ 4.0 x 10³ U/mg

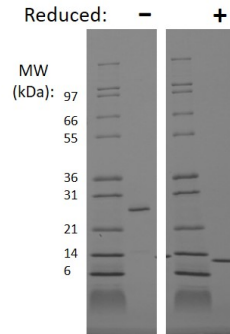
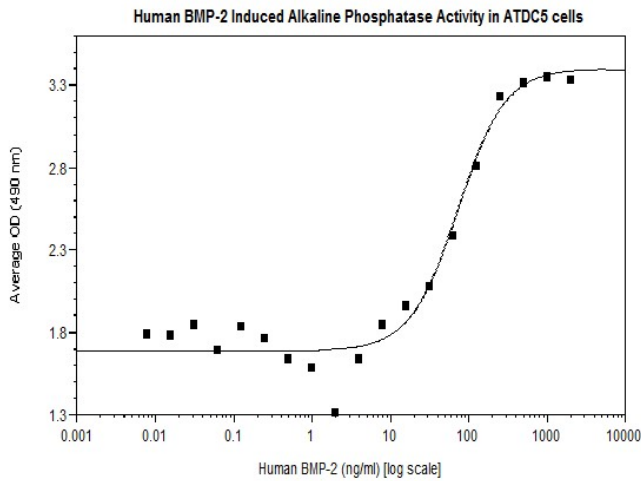
Amino Acid Sequence: MQAKHKQRKR LKSSCKRHPL YVDFSDVGWN DWIVAPPGYH AFYCHGECPF
PLADHLNSTN HAIVQTLVNS VNSKIPKACC VPTELSAISM LYLDENEKVV
LKNYQDMVVE GCGCR

Reconstitution: **Centrifuge vial prior to opening.** Add sterile distilled water to a concentration of 0.1 mg/ml. **DO NOT VORTEX.** Allow several minutes for complete reconstitution. Further dilution should be made in appropriate buffered solutions containing a carrier protein such as 0.1% BSA.



Storage & Stability:

Lyophilized product is stable at room temperature for shipping purposes. Upon receipt, store as supplied, for up to 1 year at -20°C to -80°C. Upon reconstitution, the preparation is stable for up to one month at 2-8°C. For long term storage, freeze in working aliquots and store at -20 to -80°C. **Avoid repeated freeze-thaw cycles.**



Human BMP-2 Gel

1 ug in each lane (-) non-reducing conditions and (+) reducing conditions in a 4-20% Tris-Glycine gel, stained with Coomassie Blue. Human BMP-2 has a predicted MW of 26.0 kDa as a homodimer (with each subunit having a MW of 13.0 kDa).

NOT FOR HUMAN USE. FOR RESEARCH ONLY. NOT FOR DIAGNOSTIC OR THERAPEUTIC USE.

