

CDK6

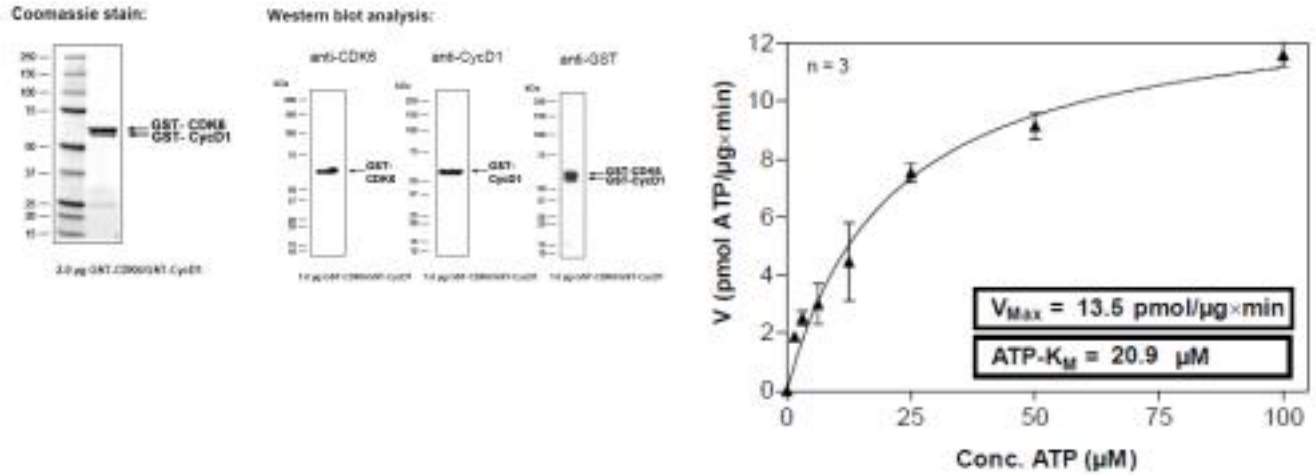
Recombinant Human CDK6/CCND1 complex Active GST-His

Catalog No.	CRC038A	Quantity:	10 µg
Alternate Names:	MGC59692, PLSTIRE, STQTL11, cell division protein kinase 6		
Description:	Co-expression of human CDK6, amino acids M ₁ - A ₃₂₆ (as in GenBank entry NM_001259) * and human CycD1, amino acids Q ₄ -I ₂₉₅ (as in GenBank entry NM_001758)*, both N-terminally fused to GST-Thrombin cleavage site. *Sequence may contain documented polymorphisms. Detailed sequence on request.		
Concentration:	0.725 µg/µl		
Gene ID:	1021		
Protein Accession No:	NM_001259		
Source:	Baculovirus infected Sf9 cells		
Molecular Weight:	Theoretical MW _{GST-CDK6} : 63,279 Da Theoretical MW _{GST-CycD1} : 59,995 Da		
Formulation:	50 mM Tris-HCl + pH 8.0 + 100 mM NaCl + 5 mM DTT + 15 mM reduced glutathione, 20% glycerol		
Purification:	One-step affinity purification using GSH-agarose		
Product Identity:	CDK6/CycD1, was confirmed as CDK6/CycD1 by specific Western Blotting using anti CDK6 and CycD1 antibodies		
Specific Activity:	14 pmol/µg×min Method for determination of K _m value and specific activity: Assay conditions: 60 mM HEPES-NaOH, pH 7.5 3 mM MgCl ₂ 3 mM MnCl ₂ 3 µM Na-orthovanadate 1.2 mM DTT 2.5 µg / 50 µl PEG _{20,000} ATP (variable) Substrate: Rb-CTF, 5 µg / 50 µl Recombinant CDK6/CyclinD1: 200 ng / 50 µl • Filter binding assay MAFC membrane (Millipore)		



Storage & Stability: Store in working aliquots at -80°C. **Avoid repeated freeze-thaw cycles.**

Determination of K_m value for ATP:



NOT FOR HUMAN USE. FOR RESEARCH ONLY. NOT FOR DIAGNOSTIC OR THERAPEUTIC USE.

