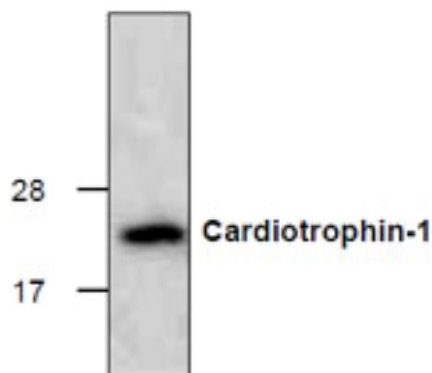


CTF1

Recombinant Human Cardiotrophin 1

| | | | |
|---------------------------------|---|------------------|--------------------------|
| Catalog No. | CRC700A CRC700B CRC700C | Quantity: | 10 µg 50 µg 1.0 mg |
| Alternate Names: | CT1, CT-1 | | |
| Description: | Cardiotrophin 1 (CTF1) is a member of the Leukemia Inhibitory (LIF)/ Ciliary Neurotrophic Factor (CNTF)/ Oncostatin M (OSM)/ Interleukin-6 (IL6)/ Interleukin-11 (IL11) family of cytokines. It affects cells through interaction with the gp130 (ILST) receptor subunit. | | |
| Gene ID: | 1489 | | |
| UniProt ID: | Q16619 | | |
| Source: | <i>E. coli</i> | | |
| Molecular Weight: | 22.5 kDa (200 aa) | | |
| Formulation: | Lyophilized from sterile filtered PBS. | | |
| Purity: | > 98% by SDS-PAGE and HPLC | | |
| Endotoxin Level: | < 0.1 ng/µg | | |
| Reconstitution: | Centrifuge the vial prior to opening. Reconstitute in 20 mM Tris, pH 8.0, to a concentration of ≤ 1.0 mg/mL. The solution can be further diluted to other aqueous buffers. | | |
| Storage & Stability: | Store as supplied at -20 °C to -80 °C for up to 1 year. Upon reconstitution store at 2-8 °C for up to one week, or long term in aliquots -80 °C. Avoid repeated freeze-thaw cycles. | | |

The purity of Recombinant Human Cardiotrophin-1 (2 µg) was analyzed by SDS-PAGE



NOT FOR HUMAN USE. FOR RESEARCH ONLY. NOT FOR DIAGNOSTIC OR THERAPEUTIC USE.