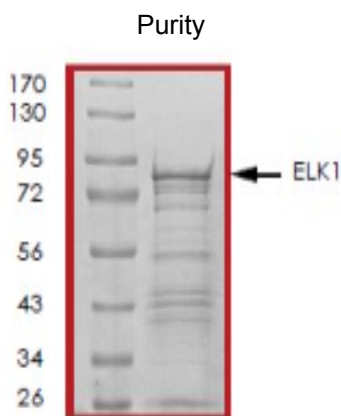


Recombinant Human Elk-1 Protein GST

Catalog No.	CRE145A CRE145B	Quantity:	20 µg 50 µg
Description:	Recombinant full-length human ELK1 was expressed in <i>E. coli</i> cells using an N-terminal GST tag.		
Concentration:	0.2 mg/ml		
Protein Accession No:	NM_005229		
Source:	<i>E. coli</i>		
Molecular Weight:	81 kDa		
Formulation:	Liquid		
Purity:	>75%		
Storage & Stability:	Store product at -80°C . For optimal storage, aliquot target into smaller quantities after centrifugation and store at recommended temperature. Avoid repeated freeze-thaw cycles.		



NOT FOR HUMAN USE. FOR RESEARCH ONLY. NOT FOR DIAGNOSTIC OR THERAPEUTIC USE.

