

EPO

Recombinant Human Erythropoietin alpha

Catalog No.	CRE600A	Quantity:	500 IU
	CRE600B		2000 IU
	CRE600C		150000 IU

Alternate Names: EPO, Epoetin

Description: Erythropoietin (EPO), a glycoprotein produced primarily by the kidney, is the principal factor that regulates erythropoiesis by stimulating the proliferation and differentiation of erythroid progenitor cells. Human EPO is processed from a 193 amino acid precursor protein to yield the mature, active protein that contains 166 amino acids. EPO contains one O-linked and three N-linked sites of glycosylation, which is required for biological activity in vivo.

UniProt ID: P01588

Gene ID: 2056

Source: CHO cells

Molecular Mass: Predicted, approximately 21 kDa. As a result of glycosylation, the recombinant protein migrates with an apparent molecular mass of 36-40 kDa in SDS-PAGE. (166 aa)

Formulation: Sterile filtered sodium citrate buffer.

Purity: >98% by SDS-PAGE and HPLC analyses

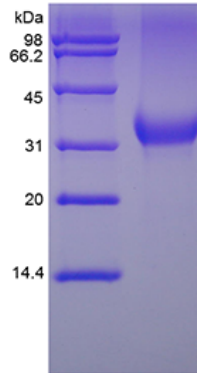
Endotoxin Level: <0.01 EU/μg by LAL method

Biological Activity: Lot specific, typically 140 IU/μl.

Specific Activity: $\geq 1.5 \times 10^5$ IU/mg, determined by stimulation of reticulocyte production in normocythaemic mice.

Amino Acid Sequence: APPRLICDSR VLERYLLEAK EAENITTGCA EHCSLNENIT VPDTKVNFYA
WKRMEVGQQA VEVWQGLALL SEAVLRGQAL LVNSSQPWEP LQLHVDKAVS
GLRSLTLLR ALGAQKEAIS PPDAASAAPL RTITADTFRK LFRVYSNFLR
GKLKLYTGEA CRTGDR

Storage & Stability: Upon receipt, store at 2-8 °C for up to 6 months. After opening under sterile conditions, store at 2-8 °C for up to 3 months **DO NOT FREEZE**



NOT FOR HUMAN USE. FOR RESEARCH ONLY. NOT FOR DIAGNOSTIC OR THERAPEUTIC USE.



Cell Sciences®
65 Parker Street
Unit 11
Newburyport, MA 01950

Toll Free: 888-769-1246
Phone: 978-572-1070
Fax: 978-992-0298

E-mail: info@cellsciences.com
Website: www.cellsciences.com