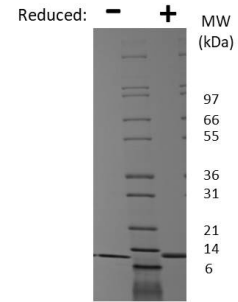
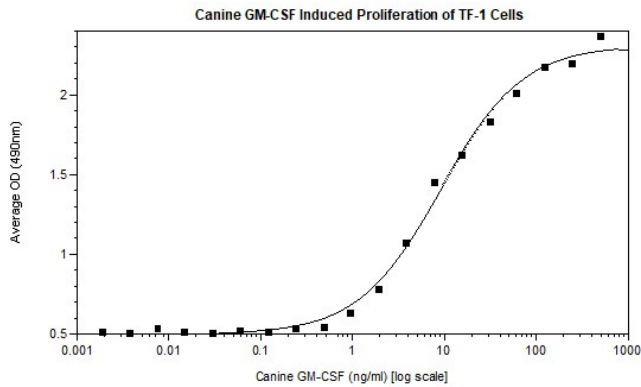


CSF2

Canine GM-CSF

Catalog No.	CRG116A CRG116B CRG116C	Quantity:	20 µg 100 µg 1 mg
Alternate Names:	CSF-2, Pluripoietin-α, MGI-1GM		
Description:	Granulocyte-macrophage colony-stimulating factor (GM-CSF) is a hematopoietic growth factor produced by endothelial cells, monocytes, fibroblasts, and T cells. GM-CSF stimulates the production of neutrophilic granulocytes, macrophages, and mixed granulocyte-macrophage colonies from bone marrow cells. GM-CSF promotes immune system development and regulates neutrophil function during infection.		
GeneID:	403923		
UniProt ID:	P48749		
Source:	<i>E.coli</i> Manufactured without Animal-derived products, in an Animal Free facility.		
Molecular Weight:	Monomer, 14.4 kDa (with 128 amino acids)		
Formulation:	Lyophilized from a sterile filtered aqueous solution containing 10 mM sodium phosphate, pH 7.5		
Purity:	≥ 95% by reducing and non-reducing SDS-PAGE		
Endotoxin Level:	≤ 1 EUs/µg by kinetic LAL		
Biological Activity:	ED ₅₀ ≤ 15 ng/ml, determined by TF-1 cell proliferation.		
Specific Activity:	≥ 6.7 x 10 ⁴ units/mg		
Amino Acid Sequence:	MAPTRSPTLV TRPSQHVD AI QEAL SLLNNS NDVTAVMNKA VKV VSEVFDP EGPTCLETRL QLYKEGLQGS LTSLKNPLTM MANHYKQHCP PTPESPCATQ NINFKSFKEN LKDFLFNIPF DCWKPVKK		
Reconstitution:	Add sterile water at 0.1 mg/ml. Centrifuge vial before opening. Suspend the product by gently pipetting the above recommended solution down the sides of the vial. DO NOT VORTEX. Allow several minutes for complete reconstitution. For prolonged storage, dilute to working aliquots in a 0.1% BSA solution, store at -80°C and avoid repeat freeze thaws.		
Storage & Stability:	Store as supplied at -20°C to -80°C for up to 1 year. Upon reconstitution, prepare working aliquots and store at -20°C to -80°C. It is recommended that a carrier protein such as 0.1% HSA or BSA is added for long term storage. Avoid repeated freeze-thaw cycles.		





Canine GM-CSF Gel

Figure: 1 ug run under (-) non-reducing conditions and (+) reducing conditions in a 4-20% Tris-Glycine gel, stained with Coomassie Blue. Canine GM-CSF is predicted to have a MW of 14.4 kDa.

NOT FOR HUMAN USE. FOR RESEARCH ONLY. NOT FOR DIAGNOSTIC OR THERAPEUTIC USE.



Cell Sciences®
65 Parker Street
Unit 11
Newburyport, MA 01950

Toll Free: 888-769-1246
Phone: 978-572-1070
Fax: 978-992-0298

E-mail: info@cellsciences.com
Website: www.cellsciences.com