

## IL12A / EB13

### Recombinant Human IL-35 Heterodimer

<b>Catalog No.</b>	CRH312A	<b>Quantity:</b>	2 µg
	CRH312B		10 µg
	CRH312C		100 µg

**Description:** Interleukin 35 (IL-35) is a member of the IL-12 cytokine family and is produced by regulatory T cells (Tregs). IL-35 is a heterodimeric cytokine that is comprised of the p35 subunit (IL-12A) and the Epstein-Barr virus induced gene 3 subunit (EB13/IL-27B). IL-35 binds the IL-12Rbeta2/gp130 hetero- and homodimers to activate STAT1 and STAT4 signaling. IL-35 functions as a suppressor of immune cell inflammatory responses.

**UniProt ID:** P29459 / Q14213

**Source:** HEK 293 cells

**Molecular Weight:** 45.8/ 60-65 kDa, non-reduced  
70-80 kDa, reduced  
406 aa, heterodimer

**Formulation:** Lyophilized from a sterile-filtered solution containing 10 mM Na<sub>2</sub>PO<sub>4</sub>, 30 mM NaCl, pH 7.5

**Purity:** ≥95% by reducing and non-reducing SDS-PAGE

**Endotoxin Level:** ≤ 5 EU/µg by kinetic LAL analysis

**Biological Activity:** No data at this time.

**Amino Acid Sequence:** **p35:**  
RNLVPVATPDPGMFPCLHHSQNLRAVSNMLQKARQTLEFYPTCTSEEIDHEDITKDKTST  
VEACLPLELTKNESCLNSRETSFITNGSCLASRKTSFMMALCLSSIIYEDLKMYQVEFKTM  
NAKLLMDPKRQIFLDQNMMLAVIDELMQALNFNSETVPQKSSLEEPDFYKTKIKLCILLHAF  
RIRAVTIDRVMSYLNAS

**EB13:**  
RKGPPAALTLPVQCRASRYPIAVDCSWTLPPAPNSTSPVFSFIATYRLGMAARGHSWP  
CLQQTPSTSTCTITDVQLFSMAPYVLNVTAVHPWGSSSSFPFITEHIIKPDPEGVRLS  
PLAERQLQVQWEPGSPWFPEIFSLKYWIRYKRQGAARFHRVGPPEATSFILRAVRPRA  
RYVQVAAQDLTDYGELSDWSLPATATMSLGK

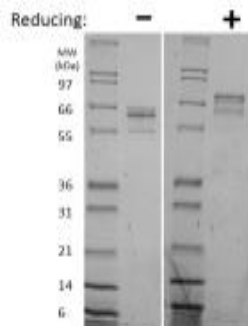
**Reconstitution:** **Centrifuge vial prior to opening.** Add sterile distilled water to a concentration of 0.1 mg/mL and gently pipette the solution up and down the sides of the vial.

**DO NOT VORTEX.** Allow several minutes for complete reconstitution.

**Storage & Stability:** Store as supplied at -20°C to -80°C for up to 1 year. Upon reconstitution, prepare working aliquots and store at -20°C to -80°C. It is recommended that a carrier protein such as 0.1% HSA or BSA is added for long term storage.

**Avoid repeated freeze-thaw cycles.**





### Human IL-35 Heterodimer (Catalog Number 100-49)

Figure: 1 ug in each lane (-) non-reducing conditions and (+) reducing conditions in a 4-20% Tris-Glycine gel, stained with Coomassie Blue. Single-chain, HIS-tagged Human IL-35 has a predicted MW of 49 kDa and an observed MW of approximately 75-95 kDa under reduced conditions and approximately 65-75 kDa under non-reduced conditions (depending on type of gel and analysis).

### Human IL-35 Western Blot Data

(Catalog # 100-49)

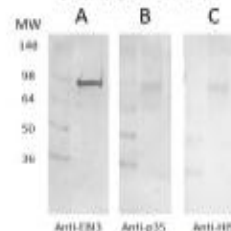


Figure: 3 ug of purified recombinant single chain human IL-35 per lane was run under reducing conditions in a 4-20% Tris-glycine gel. Samples were then analyzed via western blot with the antibodies listed below and the appropriate HRP conjugated secondary antibodies.

- (A) Rabbit Anti-Mouse EB13 Subunit (Shenandoah PAR-200-EB13)
- (B) Mouse Anti-Human p35 (Abcam ab68064)
- (C) Mouse Anti-HIS (Fisher MA1-21315)

Single chain HIS-tagged Human IL-35 has a predicted MW of 49 kDa and an observed MW of approximately 75-95 kDa under reduced conditions and approximately 65-75 kDa under non-reduced conditions (depending on type of gel and analysis).

**NOT FOR HUMAN USE. FOR RESEARCH ONLY. NOT FOR DIAGNOSTIC OR THERAPEUTIC USE.**



**Cell Sciences®**  
65 Parker Street  
Unit 11  
Newburyport, MA 01950

Toll Free: 888-769-1246  
Phone: 978-572-1070  
Fax: 978-992-0298

E-mail: [info@cellsciences.com](mailto:info@cellsciences.com)  
Website: [www.cellsciences.com](http://www.cellsciences.com)