

## IL2

### Recombinant Human Interleukin-2

<b>Catalog No.</b>	CRI100A	<b>Quantity:</b>	10 µg
	CRI100B		50 µg
	CRI100C		1.0 mg

**Alternate Names:** IL-2, T-cell Growth Factor, TCGF, Aldesleukin, Lymphokine

**Description:** Interleukin-2 is a powerful immunoregulatory lymphokine produced by T-cells in response to antigenic or mitogenic stimulation. It is expressed by CD4+ and CD8+ T cells,  $\gamma\delta$  T cells, B cells, dendritic cells, and eosinophils. IL-2/IL-2R signaling is required for T-cell proliferation and other fundamental functions that are essential for the immune response. The receptor for IL-2 contains three subunits (55 kDa IL2R $\alpha$ , 75 kDa IL2R $\beta$ , 64 kDa common gamma chain  $\gamma$ /IL2R $\gamma$ ) that are present on the cell surface in varying preformed complexes.

**Gene ID:** 3558

**UniProt ID:** P60568

**Source:** *E. coli*

**Molecular Weight:** 15.5 kDa (134 aa) monomer

**Formulation:** Lyophilized from sterile filtered solution containing 0.1% Trifluoroacetic Acid (TFA)

**Purity:**  $\geq 95\%$  by reducing and non-reducing SDS-PAGE

**Endotoxin Level:**  $\leq 1$  EU/ $\mu$ g by kinetic LAL

**Biological Activity:** ED<sub>50</sub>  $\leq 3$  ng/ml, determined by the dose-dependant proliferation of mouse CTLL-2 cells. In addition, this product has been tested for primary human T cell proliferation, with a typical ED<sub>50</sub>  $< 1$  ng/ml.

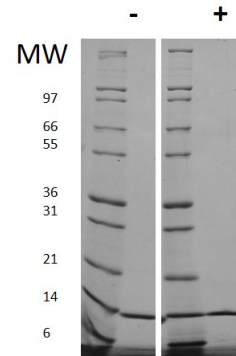
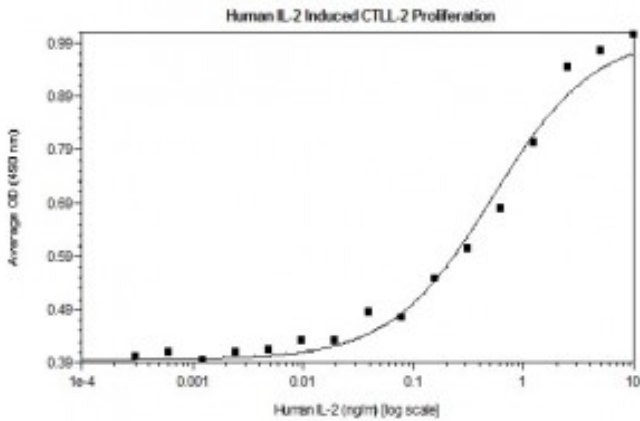
**Specific Activity:**  $\geq 3.3 \times 10^5$  U/mg by CTLL-2 assay, The specific activity of this product calibrated against the recombinant human IL-2 WHO International Standard (NIBSC code: 86/500) is approximately  $1.8 \times 10^4$  IU/ $\mu$ g.

**Amino Acid Sequence:** MAPTSSSTKK TQLQLEHLLL DLQMILNGIN NYKNPKLTRM LTFKFYMPKK  
ATELKHLLQCL EEELKPLEEV LNLAQSKNFH LRPRDLISNI NVIVLELKGS  
ETTFMCEYAD ETATIVEFLN RWITFCQSII STLT

**Reconstitution:** **Centrifuge vial prior to opening.** Add sterile 10 mM HCl to a concentration of 0.1 mg/mL. **DO NOT VORTEX.** Allow several minutes for complete reconstitution.

**Storage & Stability:** Store as supplied at -20°C to -80°C for up to 1 year. Upon reconstitution, prepare working aliquots and store at -20°C to -80°C. It is recommended that a carrier protein such as 0.1% HSA or BSA is added for long term storage.  
**Avoid repeated freeze-thaw cycles.**





#### Human IL-2

Figure: 1 ug in each lane (-) non-reducing conditions and (+) reducing conditions in a 4-20% Tris-Glycine gel, stained with Coomassie Blue. Human IL-2 has a predicted MW of 15.5 kDa.

**NOT FOR HUMAN USE. FOR RESEARCH ONLY. NOT FOR DIAGNOSTIC OR THERAPEUTIC USE.**



**Cell Sciences®**  
65 Parker Street  
Unit 11  
Newburyport, MA 01950

Toll Free: 888-769-1246  
Phone: 978-572-1070  
Fax: 978-992-0298

E-mail: [info@cellsciences.com](mailto:info@cellsciences.com)  
Website: [www.cellsciences.com](http://www.cellsciences.com)