

IL15

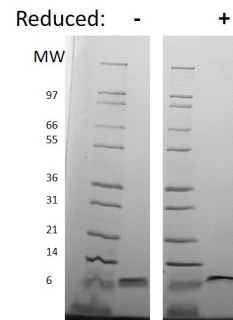
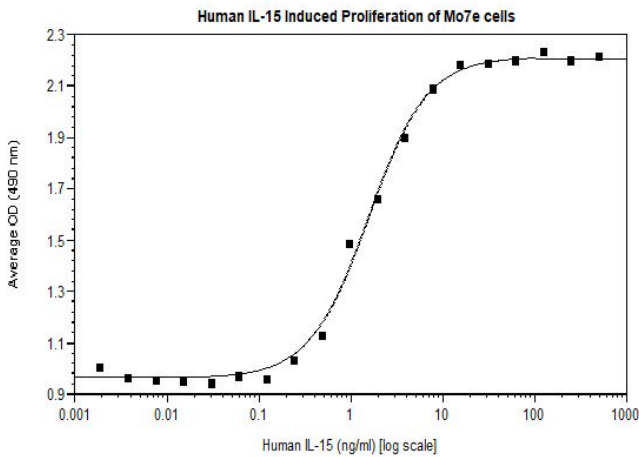
Recombinant Human Interleukin-15

Catalog No.	CRI137A CRI137B CRI137C	Quantity:	2 µg 10 µg 1.0 mg
Alternate Names:	IL-15, IL-T		
Description:	<p>Interleukin 15 is a cytokine that shares many biological properties with IL-2, including T, B and NK cell-stimulatory activities. Human IL-15 shares approximately 97% and 73% sequence identity with simian and murine IL-15, respectively. Both human and simian IL-15 are active on murine cells. Human IL-15 cDNA encodes a 162 amino acid residue precursor protein containing a 48 amino acid residue signal peptide that is cleaved to yield the 114 amino acid residue mature protein. The IL-15 mRNA is expressed by a wide variety of cells and tissues and is most abundantly expressed by adherent peripheral blood mononuclear cells, fibroblasts and epithelial cells. However, in activated peripheral blood T lymphocytes where IL-2 is highly expressed, the expression of IL-15 is not detectable. Although IL-15 lacks sequence homology with IL-2, it has recently been shown that both the beta and gamma chains of the IL-2 receptor are utilized for IL-15 binding and signaling.</p>		
ENTREZ Gene ID:	3600		
UniProtKB:	P40933		
Source:	<i>E. coli</i>		
Molecular Weight:	Monomer, 12.9 kDa (115aa)		
Formulation:	Lyophilized from a 0.2µm filtered concentrated solution containing 10 mM sodium bicarbonate, pH 8.5		
Purity:	≥ 95% by reducing and non-reducing SDS-PAGE		
Endotoxin Level:	≤1 EUs/µg by kinetic LAL		
Biological Activity:	<p>ED₅₀ ≤ 5 ng/ml, determined by a proliferation assay using murine CTLL-2 cells. ED₅₀ ≤ 2 pg/ml, determined by a proliferation assay using MO7e cells.</p>		
Specific Activity:	<p>≥ 2.0 x 10⁵ units/mg by CTLL-2 cell proliferation. ~2.7 x 10⁵ IU/µg, which is calibrated against recombinant human IL-15 WHO International Standard (NIBSC code: 91/678) in MO7e cells</p>		
Amino Acid Sequence:	MNWVNVISDL KKIEDLIQSM HIDATLYTES DVHPCKVTA MKCFLLLELQV ISLESGDASI HDTVENLIIL ANNSLSSNGN VTESGCKECE ELEEKNIKEF LQSFVHIVQM FINTS		
Reconstitution:	<p>Centrifuge vial prior to opening. Add sterile distilled water to a concentration of 0.1 mg/mL and gently pipette the solution up and down the sides of the vial. DO NOT VORTEX. Allow several minutes for reconstitution.</p>		



Storage & Stability:

Upon receipt, store at -20 °C to -80 °C for up to 1 year. **Upon reconstitution** store at 2 -8 °C for up to 1 month. **For long term storage** reconstitute in working aliquots containing 0.1% BSA and store at -20 °C to -80 °C. **Avoid repeated freeze-thaw cycles.**



Human IL-15

Figure: 1 ug in each lane (-) non-reducing conditions and (+) reducing conditions in a 4-20% Tris-Glycine gel, stained with Coomassie Blue. Human IL-15 is a protein with a predicted MW of 12.9 kDa.

NOT FOR HUMAN USE. FOR RESEARCH ONLY. NOT FOR DIAGNOSTIC OR THERAPEUTIC USE.

