

Il1b

Recombinant Mouse Interleukin-1 beta

Catalog No.	CRI139A	Quantity:	2 µg
	CRI139B		10 µg
	CRI139C		1.0 mg

Alternate Names: Il-1b, IL-1beta

Description: Interleukin-1 beta (IL-1beta) is a proinflammatory cytokine produced in a variety of cells including monocytes, tissue macrophages, keratinocytes and other epithelial cells. Both IL-1alpha and IL-1beta binds to the same receptor and has similar if not identical biological properties. These cytokines have a broad range of activities including, stimulation of thymocyte proliferation, by inducing IL-2 release, B-cell maturation and proliferation, mitogenic FGF-like activity and the ability to stimulate the release of prostaglandin and collagenase from synovial cells. However, whereas IL-1beta is a secreted cytokine, IL-1alpha is predominantly a cell associated cytokine.

Gene ID: 16176

UniProt ID: P10749

Source: *E. coli*

Molecular Weight: 17.5 kDa (153 aa)

Formulation: Lyophilized from a 0.2 µm filtered 10 mM sodium phosphate, pH 7.5.

Purity: ≥ 95% by reducing and non-reducing SDS-PAGE

Endotoxin Level: ≤ 1 EU/µg as determined by kinetic LAL method.

Biological Activity: ED₅₀ < 15 pg/ml, determined by a cell proliferation assay of mouse D10S cells.

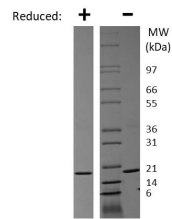
Specific Activity: ≥ 6.7 × 10⁷ IU/mg.

Amino Acid Sequence: MVPIRQLHYR LRDEQQKSLV LSDPYELKAL HLNQININQQ VIFSMSFVQG
EPSNDKIPVA LGLKGKNLYL SCVMKDGTP T LQLESVDPKQ YPKKKMEKRF
VFNKIEVKSK VEFESAEPN WYISTSQAEH KPVFLGNSG QDIIDFTMES VSS

Reconstitution: **Centrifuge vial prior to opening.** Add sterile distilled water or aqueous buffer to a concentration of 0.1-1.0 mg/ml. Further dilutions should be made in appropriate buffered solutions.

Storage & Stability: Store as supplied at -20°C to -80°C for up to 1 year. Upon reconstitution, prepare working aliquots and store at -20°C to -80°C. It is recommended that a carrier protein such as 0.1% HSA or BSA is added for long term storage.

Avoid repeated freeze-thaw cycles.



Mouse IL-1 beta Gel

Figure: 1 ug run under (-) non-reducing conditions and (+) reducing conditions in a 4-20% Tris-Glycine gel, stained with Coomassie Blue. Mouse IL-1 beta is predicted to have a MW of 17.5 kDa.

NOT FOR HUMAN USE. FOR RESEARCH ONLY. NOT FOR DIAGNOSTIC OR THERAPEUTIC USE.



Cell Sciences®
65 Parker Street
Unit 11
Newburyport, MA 01950

Toll Free: 888-769-1246
Phone: 978-572-1070
Fax: 978-992-0298

E-mail: info@cellsciences.com
Website: www.cellsciences.com