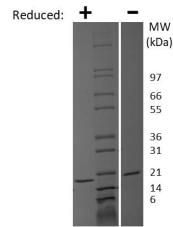


IL1b

Recombinant Rat Interleukin-1 beta

Catalog No.	CRI144A CRI144B CRI144C	Quantity:	2 µg 10 µg 1.0 mg
Alternate Names:	IL-1β, Catabolin, Lymphocyte-activating factor (LAF), Endogenous Pyrogen (EP), Leukocyte Endogenous Mediator (LEM), Mononuclear Cell Factor (MCF), IL1F2		
Description:	IL-1β is a proinflammatory cytokine produced in a variety of cells including monocytes, tissue macrophages, keratinocytes and other epithelial cells. Both IL-1α and IL-1β bind to the same receptor and has similar biological properties. These cytokines have a broad range of activities including, stimulation of thymocyte proliferation, B-cell maturation and proliferation, mitogenic FGF-like activity and stimulation of the release of prostaglandin and collagenase from synovial cells. However, whereas IL-1β is a secreted cytokine, IL-1α is predominantly a cell-associated cytokine.		
Gene ID:	24494		
UniProt ID:	Q63264		
Source:	<i>E. coli</i>		
Molecular Weight:	17.4 kDa, 153 aa		
Formulation:	Lyophilized from a sterile filtered (0.2 micron) solution containing 10 mM sodium phosphate, pH 7.4		
Purity:	≥ 95.0% by reducing and non-reducing SDS-PAGE		
Endotoxin Level:	≤ 1 EU/µg, determined by kinetic LAL analysis.		
Biological Activity:	ED ₅₀ < 25 ng/ml, determined by the dose-dependant proliferation of mouse D10S cells.		
Amino Acid Sequence:	MVPIRQLHCR LRDEQKCLV LSDPCELKAL HLNGQNISQQ VVFSMSFVQG ETSNDKIPVA LGLKGLNLYL SCVMKDGTPPT LQLESVDPKQ YPKKKMEKRF VFNKIEVGTK VEFESAQFPN WYISTSQAEH RPVFLGNSNG RDIVDFTMEP VSS		
Reconstitution:	Centrifuge vial prior to opening. Add sterile distilled water or aqueous buffer to a concentration of 0.1-1.0 mg/ml. Further dilutions should be made in appropriate buffered solutions.		
Storage & Stability:	Store as supplied at -20°C to -80°C for up to 1 year. Upon reconstitution, prepare working aliquots and store at -20°C to -80°C. It is recommended that a carrier protein such as 0.1% HSA or BSA is added for long term storage. Avoid repeated freeze-thaw cycles.		





Rat IL-1 beta Gel

Figure: 1 ug run under (-) non-reducing conditions and (+) reducing conditions in a 4-20% Tris-Glycine gel, stained with Coomassie Blue. Rat IL-1 beta is predicted to have a MW of 17.4 kDa.

NOT FOR HUMAN USE. FOR RESEARCH ONLY. NOT FOR DIAGNOSTIC OR THERAPEUTIC USE.



Cell Sciences®
65 Parker Street
Unit 11
Newburyport, MA 01950

Toll Free: 888-769-1246
Phone: 978-572-1070
Fax: 978-992-0298

E-mail: info@cellsciences.com
Website: www.cellsciences.com