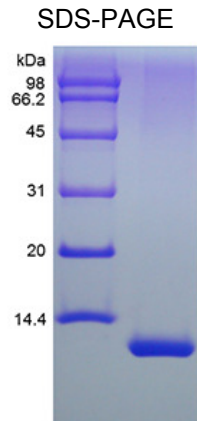


IL13

Recombinant Human Interleukin-13

Catalog No.	CRI158A CRI158B CRI158C	Quantity:	2 µg 10 µg 1.0 mg
Alternate Names:	ALRH, BHR1, IL-13		
Description:	<p>Interleukin-13 (IL-13) is an immunoregulatory cytokine produced primarily by activated Th2 cells, and also by mast cells and NK cells. Targeted deletion of IL-13 in mice resulted in impaired Th2 cell development and indicated an important role for IL-13 in the expulsion of gastrointestinal parasites. IL-13 exerts anti-inflammatory effects on monocytes and macrophages and it inhibits the expression of inflammatory cytokines such as IL-1 beta, TNF-alpha, IL-6 and IL-8. IL-13 has also been shown to enhance B-cell proliferation and to induce isotype switching resulting in increased production of IgE. Blocking of IL-13 activity inhibits the pathophysiology of asthma. Human and Mouse IL-13 is cross-species reactive.</p> <p>Recombinant Human IL-13 is a single, non-glycosylated polypeptide chain containing 112 amino acids.</p>		
Gene ID:	3596		
Physical Appearance:	Sterile Filtered White lyophilized (freeze-dried) powder.		
Source:	<i>E. coli</i>		
Molecular Weight:	12.5 kDa		
Formulation:	Lyophilized from a 0.2 µm filtered concentrated solution in PBS, pH 7.4 with 5 % trehalose.		
Purity:	>97% by HPLC and SDS-PAGE		
Endotoxin Level:	<1 EU/µg of recombinant human IL-13 as determined by LAL method.		
Biological Activity:	Fully biologically active when compared to standard. The ED ₅₀ determined by a cell proliferation assay using human TF-1 cells is less than 1 ng/ml.		
Specific Activity:	> 1.0 × 10 ⁶ IU/mg.		
Amino Acid Sequence:	GPVPPSTALR ELIEELVNIT QNQKAPLCNG SMVWSINLTA GMYCAALES INVSGCSAIE KTQRMLSGFC PHKVSAGQFS SLHVRDTKIE VAQFVKDLLL HLKCLFREGR FN		
Reconstitution:	Centrifuge vial prior to opening. Reconstitute in 20 mM HCl to a concentration of 0.1 -1.0 mg/ml. Stock solutions should be apportioned into working aliquots and stored at -20 °C.		
Storage & Stability:	The lyophilized protein is stable at 2-8°C. Upon receipt, store desiccated at -20°C. After reconstitution, the preparation is stable for up to one week at 2-8°C. For maximal stability, apportion the reconstituted preparation into working aliquots and store at -20°C to -80°C. For long term storage of reconstituted protein, it is recommended that a carrier protein such as 0.1% BSA or HSA be added. This depends on the particular application. Avoid repeated freeze/thaw cycles.		





NOT FOR HUMAN USE. FOR RESEARCH ONLY. NOT FOR DIAGNOSTIC OR THERAPEUTIC USE.



Cell Sciences[®]
65 Parker Street
Unit 11
Newburyport, MA 01950

Toll Free: 888-769-1246
Phone: 978-572-1070
Fax: 978-992-0298

E-mail: info@cellsciences.com
Website: www.cellsciences.com