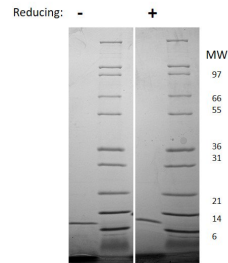


II13

Recombinant Mouse Interleukin-13

Catalog No.	CRI159A CRI159B CRI159C	Quantity:	2 µg 10 µg 1.0 mg
Alternate Names:	IL-13, T-cell activation protein P600		
Description:	Interleukin-13 (IL-13) is an immunoregulatory cytokine produced primarily by activated Th2 cells, and also by mast cells and NK cells. Targeted deletion of IL-13 in mice resulted in impaired Th2 cell development and indicated an important role for IL-13 in the expulsion of gastrointestinal parasites. IL-13 exerts anti-inflammatory effects on monocytes and macrophages and it inhibits the expression of inflammatory cytokines such as IL-1beta, TNF-alpha, IL-6 and IL-8. IL-13 has also been shown to enhance B cell proliferation and to induce isotype switching resulting in increased production of IgE. Blocking of IL-13 activity inhibits the pathophysiology of asthma. IL-13 functions are mediated through the JAK/STAT signaling pathway. Human and mouse IL-13 are cross-reactive.		
UniProt ID:	P20109		
Gene ID:	16163		
Source:	<i>E. coli</i>		
Molecular Weight:	12.3 kDa (111 aa) monomer		
Formulation:	Lyophilized from a sterile filtered aqueous solution containing 0.1% Trifluoroacetic Acid (TFA)		
Purity:	≥ 95% by reducing and non-reducing SDS-PAGE		
Endotoxin Level:	≤ 1 EU/µg determined by kinetic LAL analysis.		
Biological Activity:	ED ₅₀ ≤ 10 ng/ml, determined by a cell proliferation assay using the TF-1 cell line.		
Specific Activity:	≥ 1.0 × 10 ⁵ U/mg		
Amino Acid Sequence:	MPVPRSVSLP LTLKELIEEL SNITQDQTPL CNGSMVWSVD LAAGGFCVAL DSLTNISNCN AIYRTQRILH GLCNRKAPTT VSSLPDTKIE VAHFITKLLS YTKQLFRHGPF		
Reconstitution:	Centrifuge vial prior to opening. Add sterile 20 mM HCl to a concentration of 0.1 mg/mL and gently pipet the solution up and down the sides of the vial. DO NOT VORTEX. Allow several minutes for complete reconstitution.		
Storage & Stability:	Store as supplied at -20°C to -80°C for up to 1 year. Upon reconstitution, prepare working aliquots and store at -20°C to -80°C. It is recommended that a carrier protein such as 0.1% HSA or BSA is added for long term storage. Avoid repeated freeze-thaw cycles.		





Mouse IL-13
Figure: 1 ug in each lane (-) non-reducing conditions and (+) reducing conditions in a 4-20% Tris-Glycine gel, stained with Coomassie Blue. Mouse IL-13 has a predicted MW of 12.3 kDa.

NOT FOR HUMAN USE. FOR RESEARCH ONLY. NOT FOR DIAGNOSTIC OR THERAPEUTIC USE.



Cell Sciences®
65 Parker Street
Unit 11
Newburyport, MA 01950

Toll Free: 888-769-1246
Phone: 978-572-1070
Fax: 978-992-0298

E-mail: info@cellsciences.com
Website: www.cellsciences.com