

IL20

Recombinant Human Interleukin-20

Catalog No.	CRI171A	Quantity:	2 µg
	CRI171B		10 µg
	CRI171C		1.0 mg

Alternate Names: IL-20, Cytokine Zcyto10

Description: Interleukin 20 (IL-20) is structurally related to interleukin 10 (IL-10) and is produced by keratinocytes and monocytes. IL-20 acts through the STAT3 signaling pathway to regulate the proliferation of keratinocytes during epidermal inflammation.

UniProt ID: Q9NYY1

Source: *E. coli*

Molecular Weight: 17.7/35.3 kDa (153/306 aa) dimer

Formulation: Lyophilized from sterile-filtered 10 mM sodium phosphate, 20 mM NaCl, pH 7.5

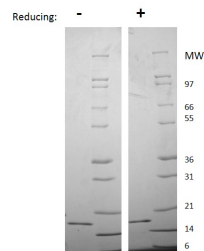
Purity: ≥ 95% by reducing and non-reducing SDS-PAGE

Endotoxin Level: ≤ 1 EU/µg, by kinetic LAL analysis

Amino Acid Sequence: MLKTLNLGSC VIATNLQEIR NGFSEIRGSV QAKDGNIDIR ILRRTESLQD
TKPANRCCLL RHLLRLYLDR VFKNYQTPDH YTLRKISSLA NSFLTICKDL
RLCHAHMTCH CGEEAMKKYS QILSHFEKLE PQAADVVKALG ELDILLQWME ETE

Reconstitution: **Centrifuge vial prior to opening.** Add sterile distilled water to a concentration of 0.1 mg/mL and gently pipette the solution up and down the sides of the vial. **DO NOT VORTEX.** Allow several minutes for complete reconstitution.

Storage & Stability: Store as supplied at -20°C to -80°C for up to 1 year. Upon reconstitution, prepare working aliquots and store at -20°C to -80°C. It is recommended that a carrier protein such as 0.1% HSA or BSA is added for long term storage. **Avoid repeated freeze-thaw cycles.**



Human IL-20
Figure: 1 µg in each lane (-) non-reducing conditions and (+) reducing conditions in a 4-20% Tris-Glycine gel, stained with Coomassie Blue. Human IL-20 is a non-covalently linked homodimer with a predicted total MW of 35.2 kDa (each monomer is 17.6 kDa).

NOT FOR HUMAN USE. FOR RESEARCH ONLY. NOT FOR DIAGNOSTIC OR THERAPEUTIC USE.



Cell Sciences®
65 Parker Street
Unit 11
Newburyport, MA 01950

Toll Free: 888-769-1246
Phone: 978-572-1070
Fax: 978-992-0298

E-mail: info@cellsciences.com
Website: www.cellsciences.com