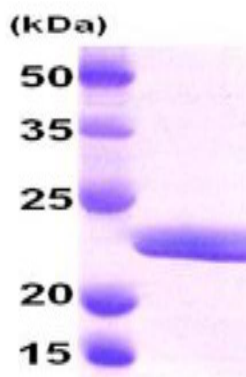


## MYL2

### Recombinant Human MYL2 (aa 1-166) His

<b>Catalog No.</b>	CRM148A CRM148B	<b>Quantity:</b>	100 µg 500 µg
<b>Alternate Names:</b>	CHM10, MLC2		
<b>Gene ID:</b>	4633		
<b>Protein Accession No:</b>	NP_000423		
<b>Description:</b>	Myosin, light chain 2 (MYL2) encodes the regulatory light chain associated with cardiac myosin beta heavy chain. It is an important protein involved in the regulation of myosin ATPase activity in smooth muscle and Ca <sup>+</sup> triggers the phosphorylation of regulatory light chain that in turn triggers contraction. Mutations in MYL2 are associated with mid-left ventricular chamber type hypertrophic cardiomyopathy. Recombinant human MYL2 protein, fused to His-tag at N-terminus, was expressed in <i>E.coli</i> and purified by using conventional chromatography techniques.		
<b>Concentration:</b>	0.5 mg/ml (determined by Bradford assay)		
<b>Source:</b>	<i>E. coli</i>		
<b>Molecular Weight:</b>	20.9 kDa (186 aa), confirmed by MALDI-TOF		
<b>Formulation:</b>	Liquid in 20mM Tris-HCl (pH 8.0) containing 20% glycerol 5mM CaCl <sub>2</sub>		
<b>Purity:</b>	> 95% by SDS PAGE		
<b>Amino Acid Sequence:</b>	MGSSHHHHHH SSGLVPRGSH MAPKKAKKRA GGANSNVFSM FEQTQIQEFK EAFTIMDQNR DGFIDKNDLR DTFAALGRVN VKNEEIDEMI KEAPGPINFT VFLTMFGEKL KGADPEETIL NAFKVFDPEG KGVLKADYVR EMLTTQAERF SKEEVDQMFA AFPPDVTGNL DYKNLVHIIT HGEEKD		
<b>Storage &amp; Stability:</b>	Can be stored at +4°C short term (1-2 weeks). For long term storage, aliquot and store at -20°C or -70°C. <b>Avoid repeated freezing and thawing cycles.</b>		

15% SDS-PAGE (3ug)



NOT FOR HUMAN USE. FOR RESEARCH ONLY. NOT FOR DIAGNOSTIC OR THERAPEUTIC USE.

