

PROS1 Native Human Protein S

Catalog No.	CRP270A	Quantity:	1.0 mg
	CRP270B		2 mg

Alternate Names: PROS1, PROS, PS21, PS22, PS23, PS24, PS25, PSA

Description: Human protein S is isolated from fresh frozen plasma by a combination of conventional methods and immunoaffinity chromatography. Protein S exists in two forms in human plasma, as the free protein and in complex with C4b-binding protein. This is the free protein from plasma which serves as a cofactor for the anticoagulant activity of activated protein C. Human protein S is a single-chain glycoprotein with >95percent purity as determined by SDS-PAGE.

Concentration: 5.0 mg/ml

Gene ID: 5627

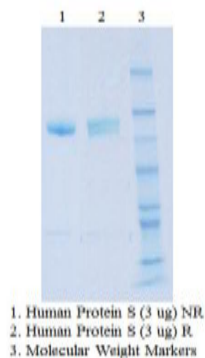
Protein Accession No: NP_000304

Source: Human plasma

Molecular Weight: 69 kDa

Formulation: Liquid in 0.02 M Tris-HC + 0.1 M NaCl + 0.001 M Benzamidine, pH 7.4

Storage & Stability: When stored at -80°C, product is stable for 3 years from date of delivery. **Avoid repeated freeze-thaw cycles.**



NOT FOR HUMAN USE. FOR RESEARCH ONLY. NOT FOR DIAGNOSTIC OR THERAPEUTIC USE.