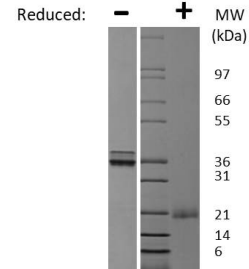
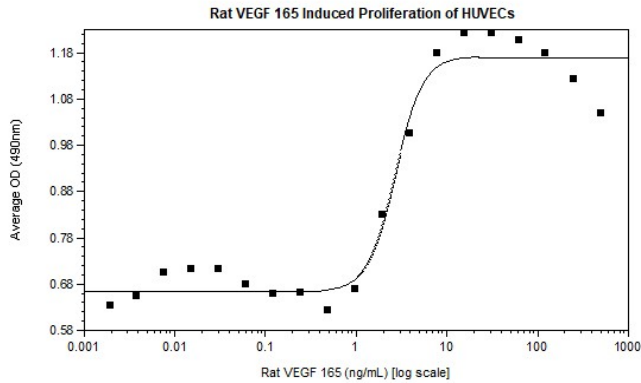


Vegfa

Recombinant Rat VEGF-165

Catalog No.	CRR310A CRR310B CRR310C	Quantity:	2 µg 100 µg 1 mg
Alternate Names:	Vascular endothelial growth factor A, Isoform VEGF-A164, VPF, glioma-derived endothelial cell mitogen		
Description:	VEGF-A is produced by a wide variety of cell types, including tumor and vascular cells. VEGF-A is a mediator of vascular growth, vascular permeability, and plays a role in stimulating vasodilation via nitric oxide-dependent pathways. VEGF-A has several alternatively spliced isoforms, with VEGF-165 being the most abundant. The VEGF-165 isoform is a secreted protein that acts on receptors VEGFR-1 and VEGFR-2 to modulate endothelial cell proliferation and angiogenesis.		
Gene ID:	83785		
UniProt ID:	P16612-2		
Source:	<i>E. coli</i>		
Molecular Weight:	Dimer, 19.4/38.8 kDa (165/330 aa)		
Formulation:	Lyophilized from a sterile-filtered solution containing 10 mM sodium phosphate, pH 7.5		
Purity:	≥ 95% by reducing and non-reducing SDS-PAGE		
Endotoxin Level:	≤ 1 EU/µg by kinetic LAL analysis		
Biological Activity:	ED ₅₀ ≤ 8 ng/ml, determined by HUVEC proliferation assay		
Amino Acid Sequence:	MAPTTEGEQK AHEVVKFMDV YQRSYCRPIE TLVDIFQEYP DEIEYIFKPS CVPLMRCAGC CNDEALECVP TSESNVTMQI MRIKPHQSQH IGEMSFLQHS RCECRPKKDR TKPEKHCEPC SERRKHLFVQ DPQTCKCSCK NTDSRCKARQ LELNERTCRC DKPRR		
Reconstitution:	Centrifuge vial prior to opening. Add sterile distilled water to reconstitute to a recommended concentration of 0.1 mg/mL and gently pipet solution up and down sides of vial. DO NOT VORTEX. Allow several minutes for reconstitution. A small amount of precipitate may be seen.		
Storage & Stability:	Store as supplied at -20°C to -80°C for up to 1 year. Upon reconstitution, prepare working aliquots and store at -20°C to -80°C. It is recommended that a carrier protein such as 0.1% HSA or BSA is added for long term storage. Avoid repeated freeze-thaw cycles.		





Rat VEGF-165 Gel

Figure: 1 ug run under (-) non-reducing conditions and (+) reducing conditions in a 4-20% Tris-Glycine gel, stained with Coomassie Blue. Rat VEGF-165 is a dimer with a predicted MW of 38.8 kDa (each monomer is 19.4 kDa).

NOT FOR HUMAN USE. FOR RESEARCH ONLY. NOT FOR DIAGNOSTIC OR THERAPEUTIC USE.



Cell Sciences®
65 Parker Street
Unit 11
Newburyport, MA 01950

Toll Free: 888-769-1246
Phone: 978-572-1070
Fax: 978-992-0298

E-mail: info@cellsciences.com
Website: www.cellsciences.com