

WEE1

Recombinant Human WEE1 Active GST-His

Catalog No.	CRW003	Quantity:	50 µg
Alternate Names:	FLJ16446, WEE1A, WEE1hu, WEE1+ homolog, wee1 tyrosine kinase, wee1-like protein kinase		
Description:	Human WEE1, Amino acids Q ₂₅₀ -Y ₆₄₆ (as in GenBank entry X62048)*, N-terminally fused to GST-HIS ₆ -Thrombin cleavage site *Sequence may contain documented polymorphisms Detailed sequence on request		
Concentration:	0.142 µg/µl		
Gene ID:	7465		
Protein Accession No:	X62048		
Source:	Baculovirus infected Sf9 cells		
Molecular Weight:	Theoretical MW _{Fusion Protein} : 74,902 Da		
Formulation:	50 mM Tris-HCl, pH 8.0 + 100 mM NaCl + 5 mM DTT + 4 mM reduced glutathione, 20% glycerol		
Purification:	One-step affinity purification using GSH-agarose		
Product Identity:	WEE1, was confirmed as WEE1 by specific Western Blotting using anti WEE1 antibody		
Specific Activity:	2 pmol/µg×min		

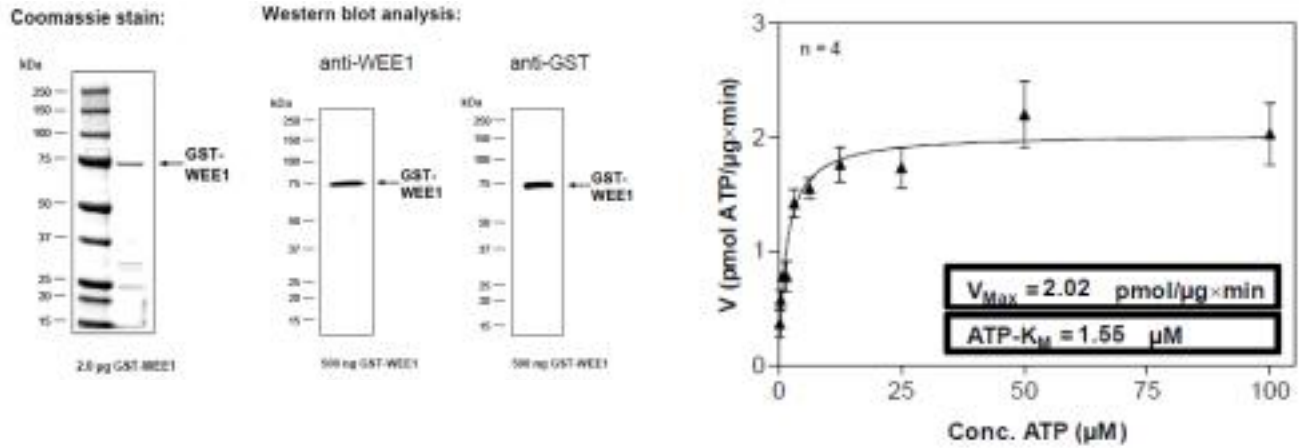
Method for determination of K_m value and specific activity:

- Assay conditions:
60 mM HEPES-NaOH, pH 7.5
3 mM MgCl₂
3 mM MnCl₂
3 µM Na-orthovanadate
1.2 mM DTT
2.5 µg / 50 µl PEG_{20,000}
ATP (variable)
Substrate: Poly(Ala,Glu,Lys,Tyr)_{6:2:5:1}
(Sigma P-1152), 1.0 µg / 50 µl
Recombinant WEE1: 200 ng / 50 µl
- Filter binding assay
MSFC membrane (Millipore)

Storage & Stability: Store in working aliquots at -80°C. **Avoid repeated freeze-thaw cycles.**



Determination of K_m value for ATP:



NOT FOR HUMAN USE. FOR RESEARCH ONLY. NOT FOR DIAGNOSTIC OR THERAPEUTIC USE.



Cell Sciences®
480 Neponset Street
Bldg 12A
Canton, MA 02021

Toll Free: 888-769-1246
Phone: 781-828-0610
Fax: 781-828-0542

E-mail: info@cellsciences.com
Website: www.cellsciences.com